

REAL Centre

The bigger picture

Learning from two decades of
changing NHS care in England

Figures and tables

October 2020



Figures

Figure 1: Framework for health care activity

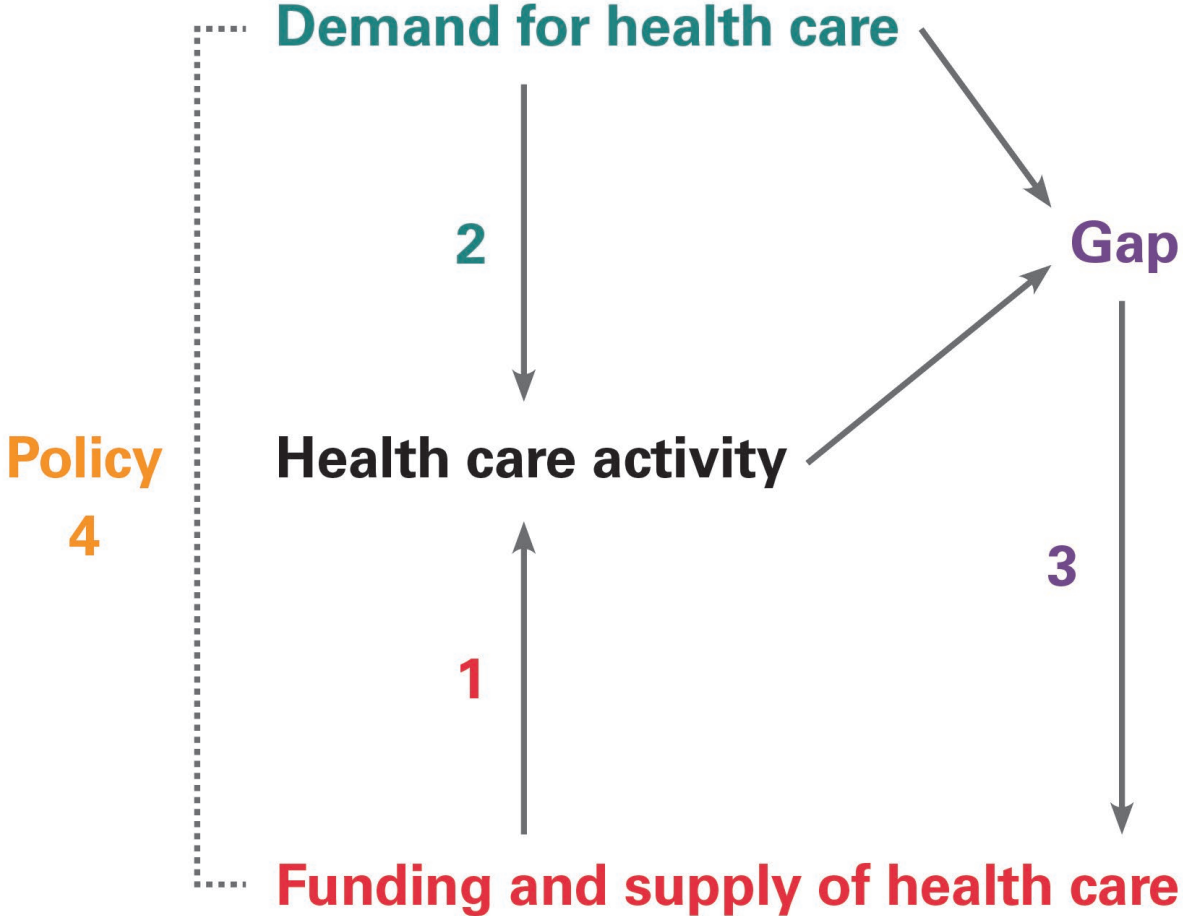


Figure 2: Health care output and quality adjusted output (index, 2000/01 = 100); annual output growth (%)

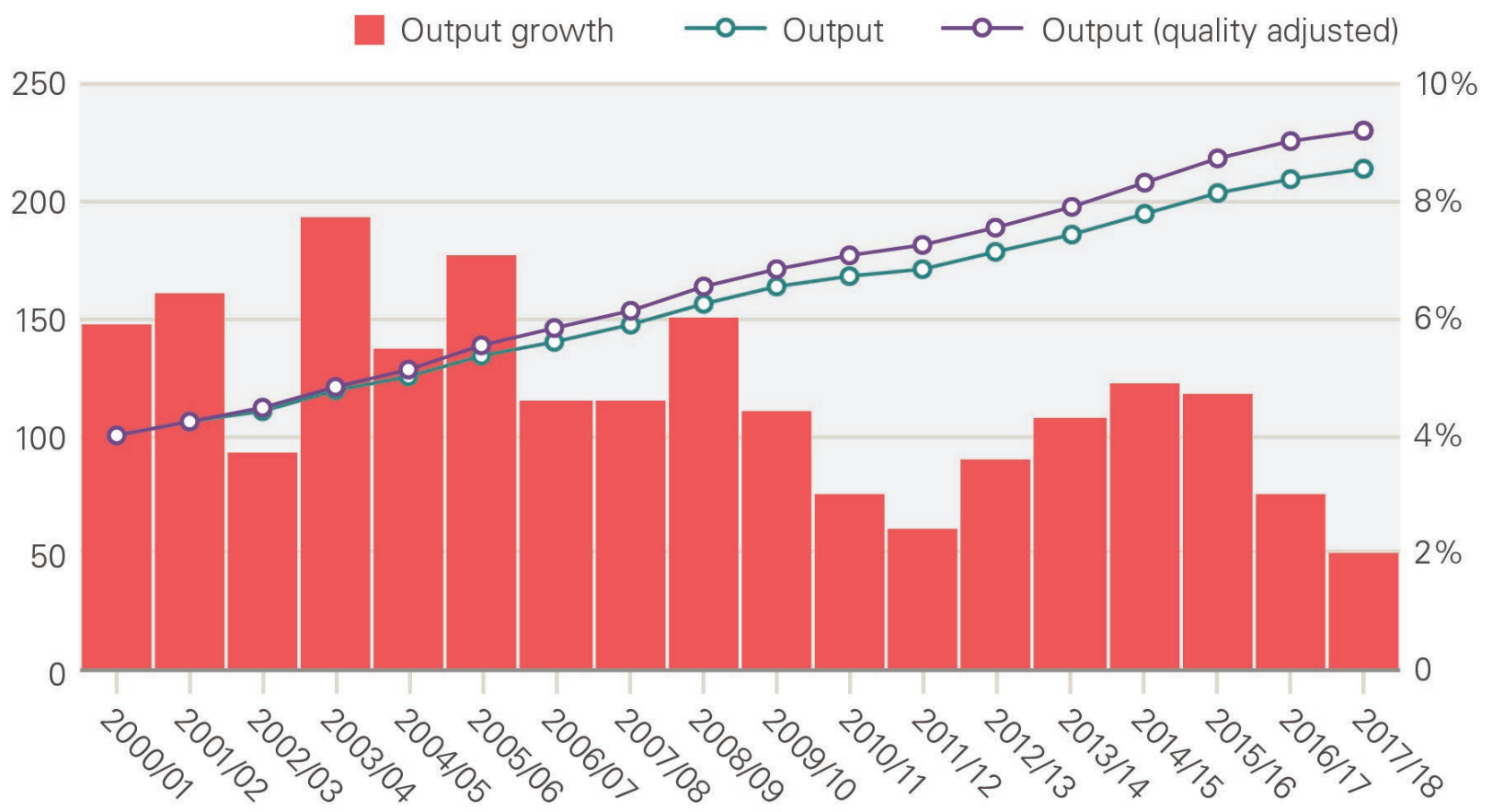


Figure 3: Annual average change in unit costs of NHS delivered activity for selected services, 2007/08 to 2017/18

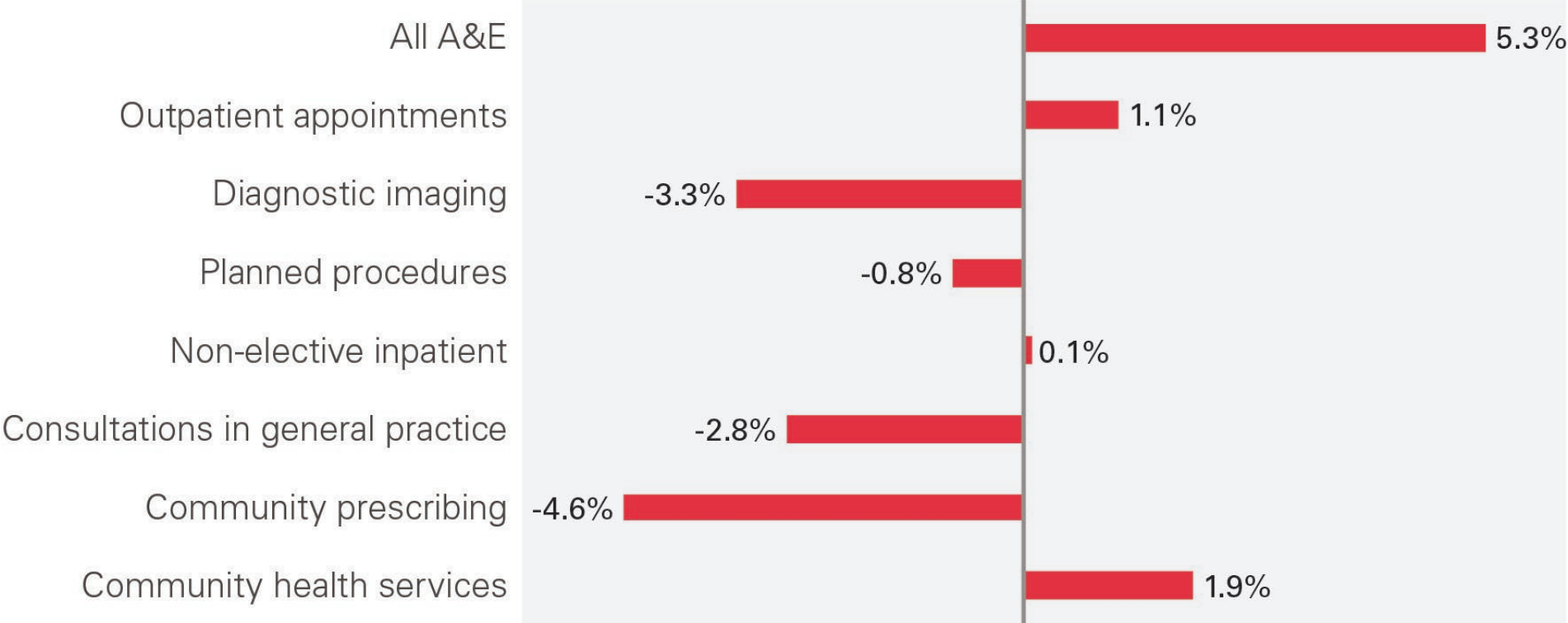


Figure 4: Annual average growth per person: funding, input and output

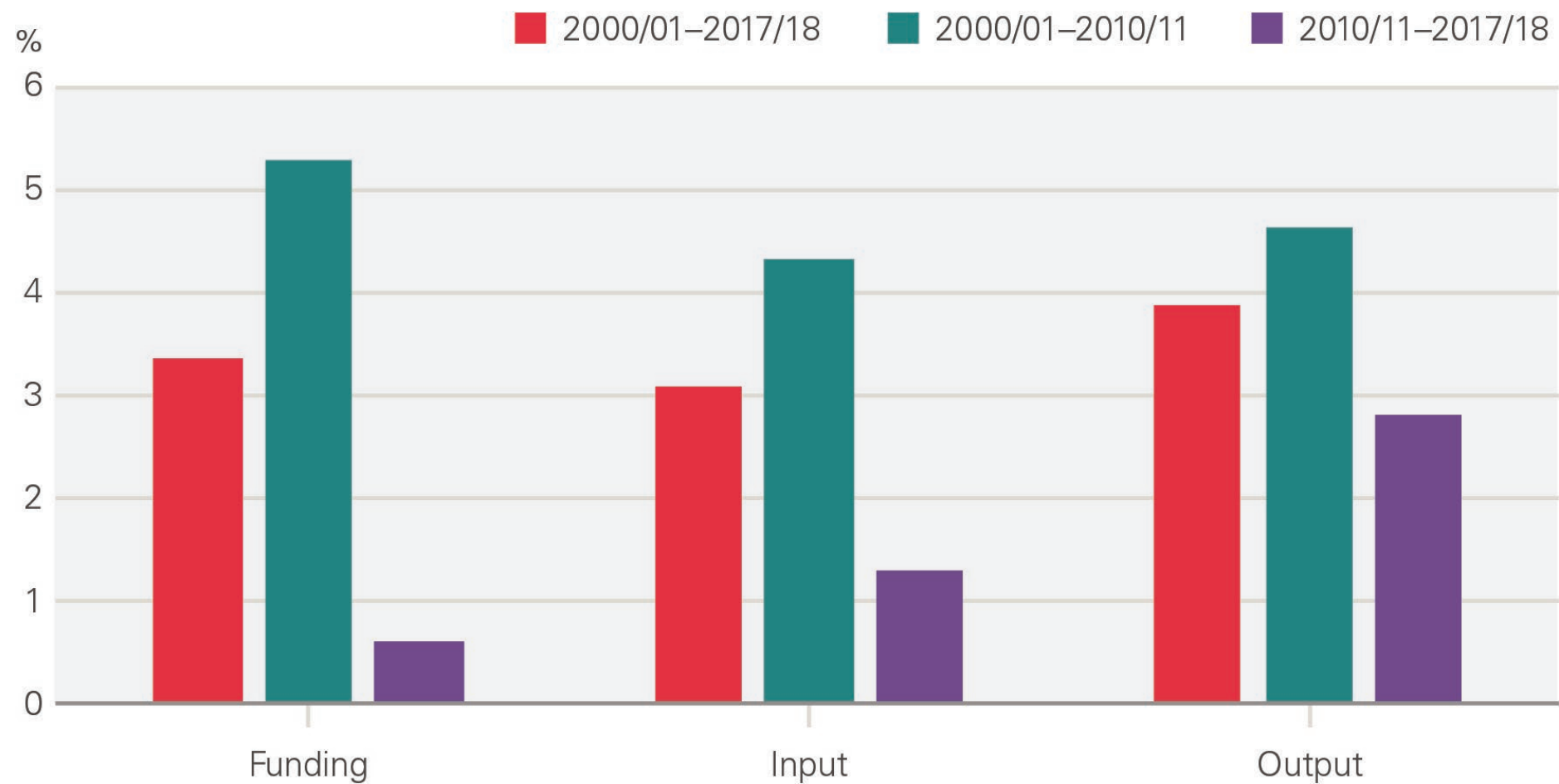
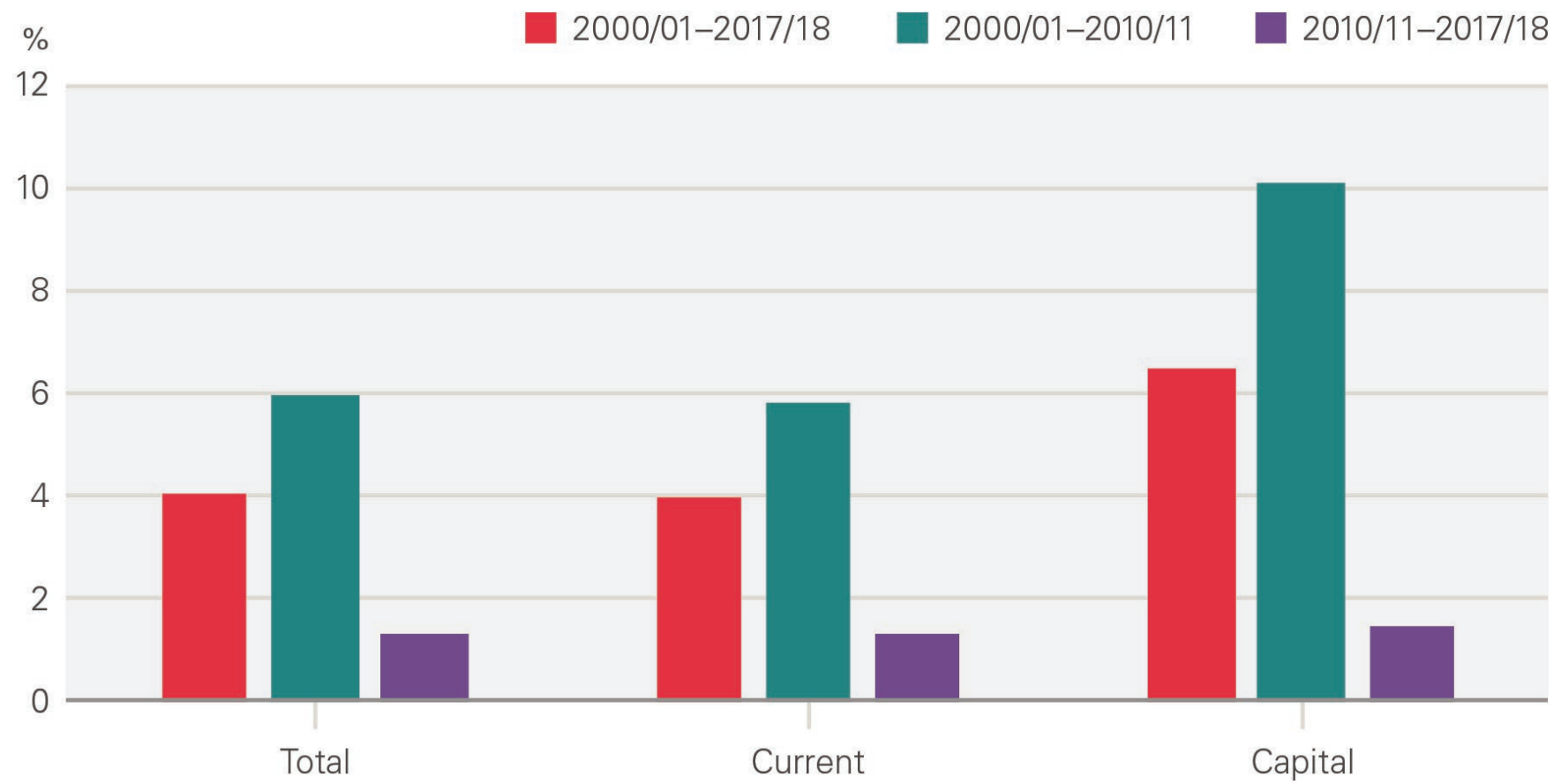
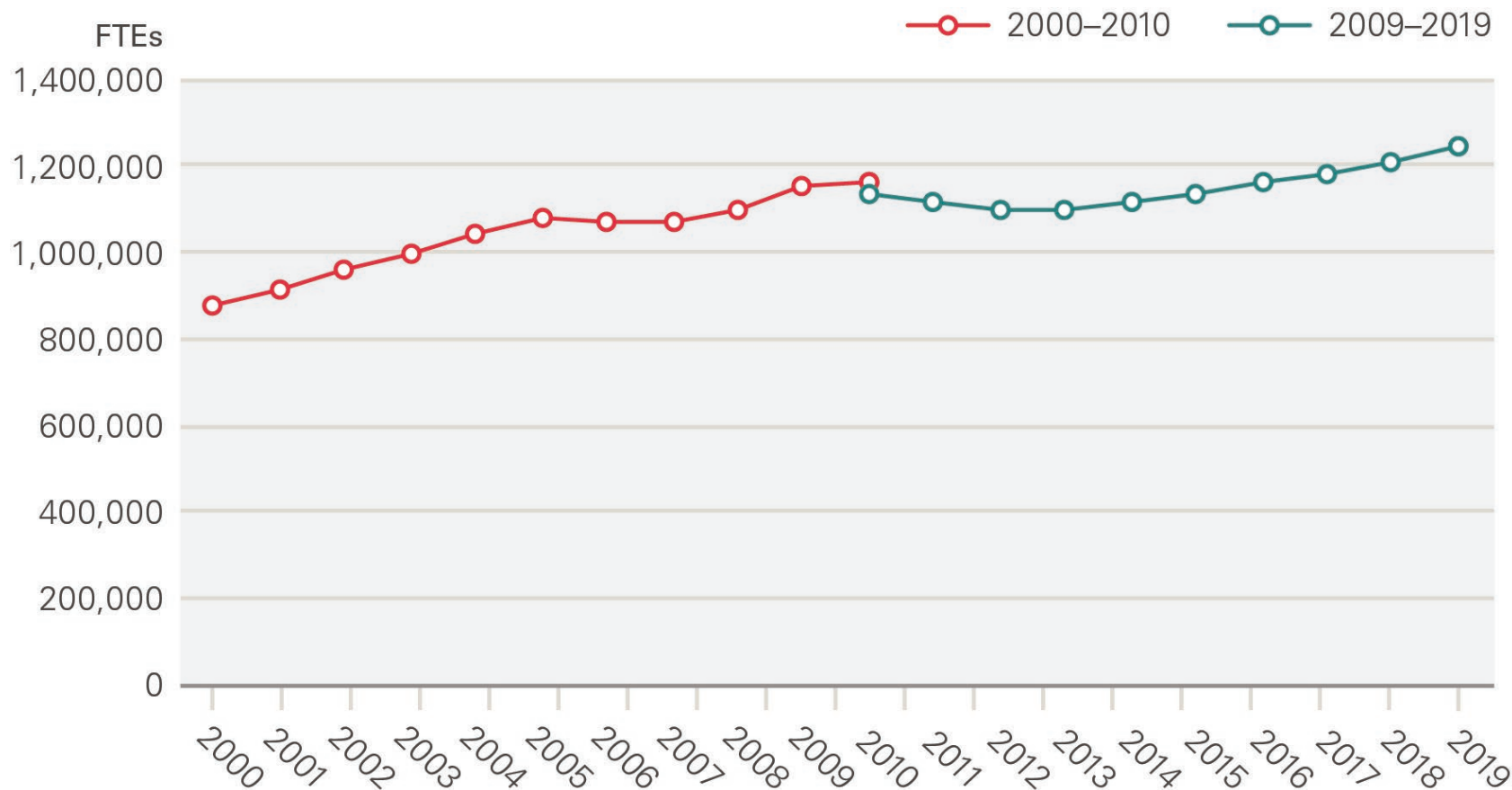


Figure 5: Annual average growth in real health spending in England: total, current and capital



Source: PESA, Table 9.11; funding in 2018/19 terms, using the GDP deflator provided by the OBR.

Figure 6: Number of FTEs in NHS hospital, community health services and general practice staff



Source: NHS Digital; break in series reflects a discontinuity in the data

Figure 7: Annual average growth in inputs, NHS staff by role and beds

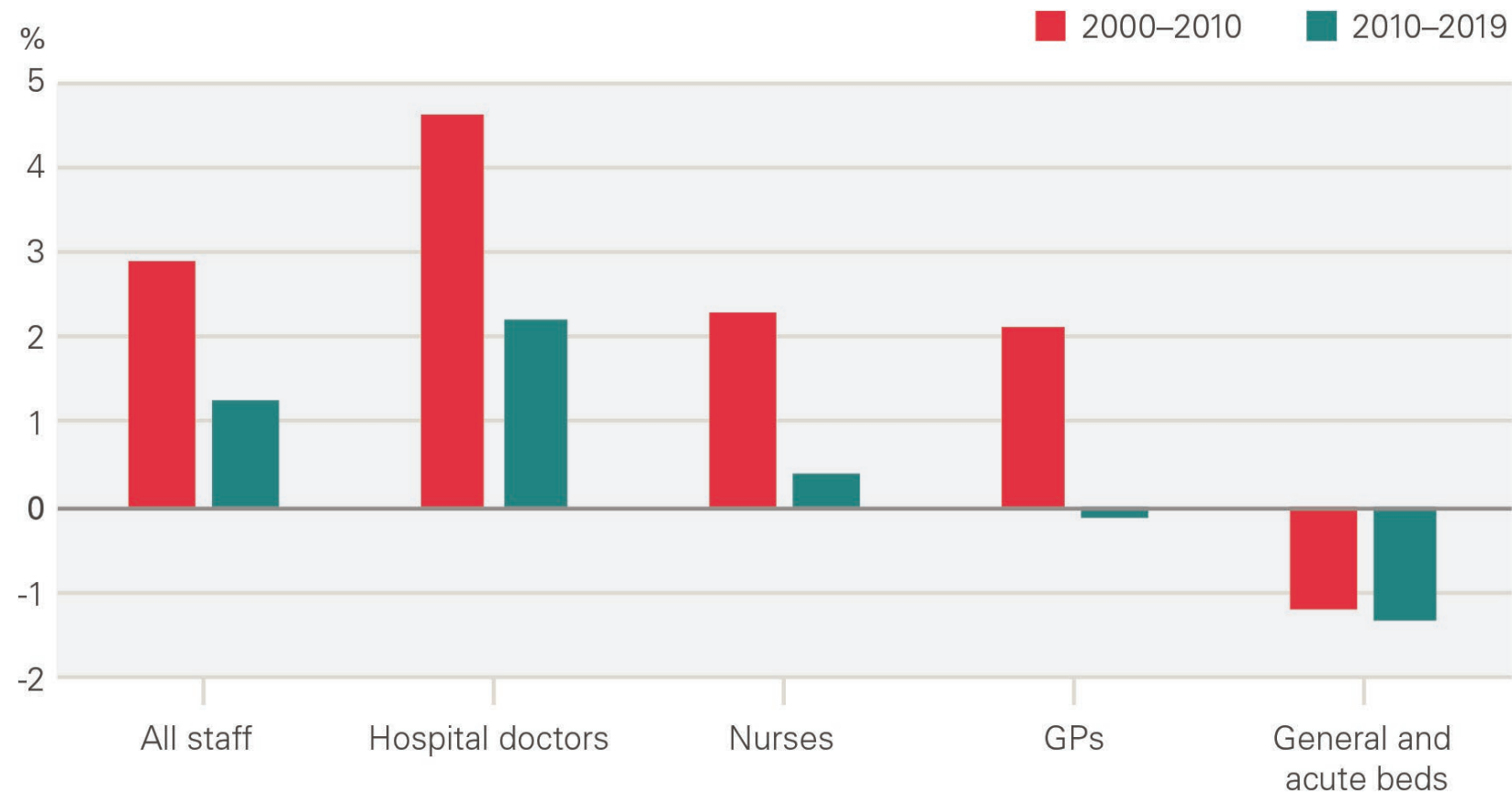
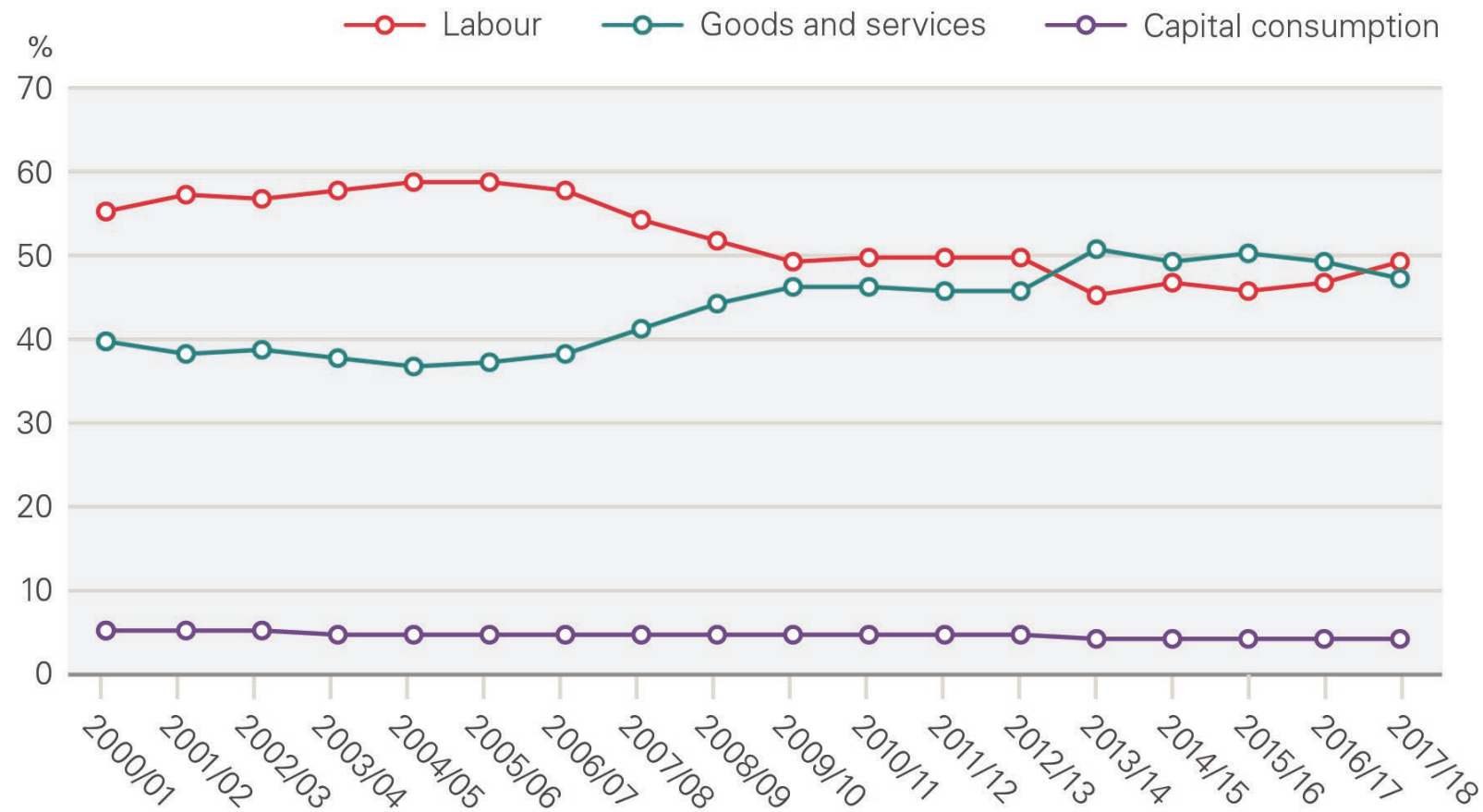


Figure 8: Share of expenditure on inputs, by type



**Figure 9: England population and population aged 65 and older
(index, 2000/01 = 100)**

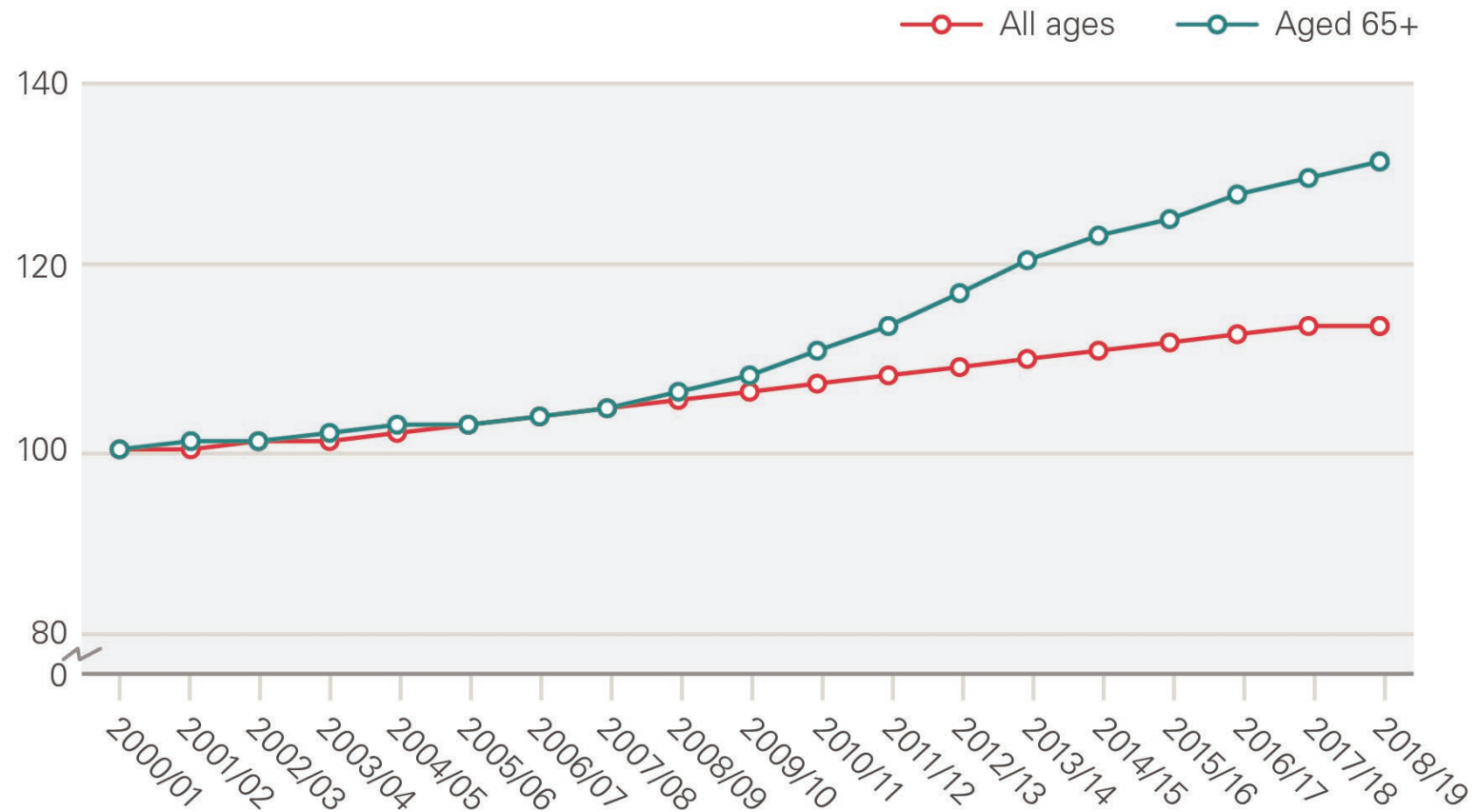


Figure 10: Birth and death rates

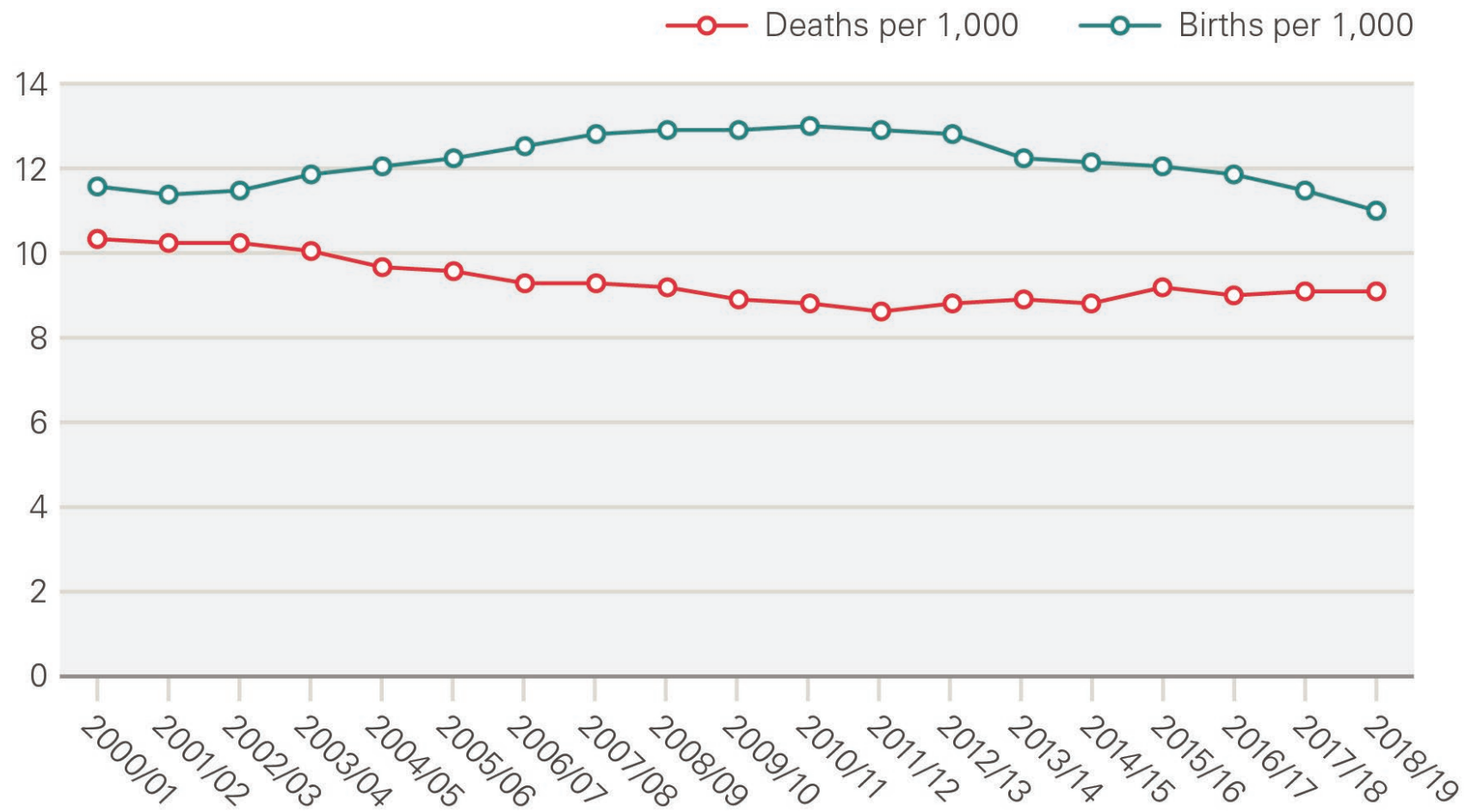


Figure 11: Share (%) of population aged 70+ by number of long-term conditions

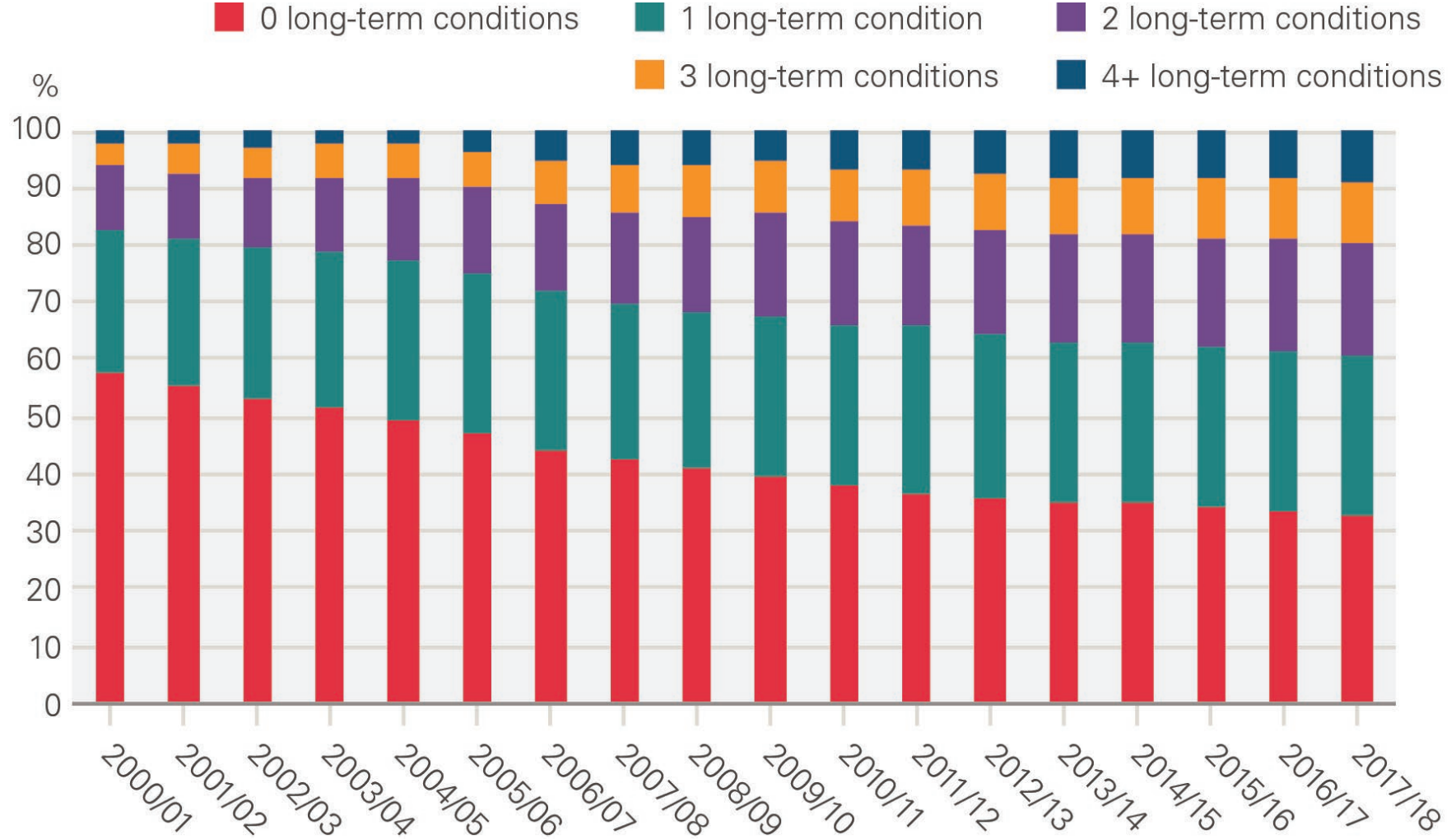


Figure 12: Annual growth (%) by service: projected by demographics, explained by other factors and observed

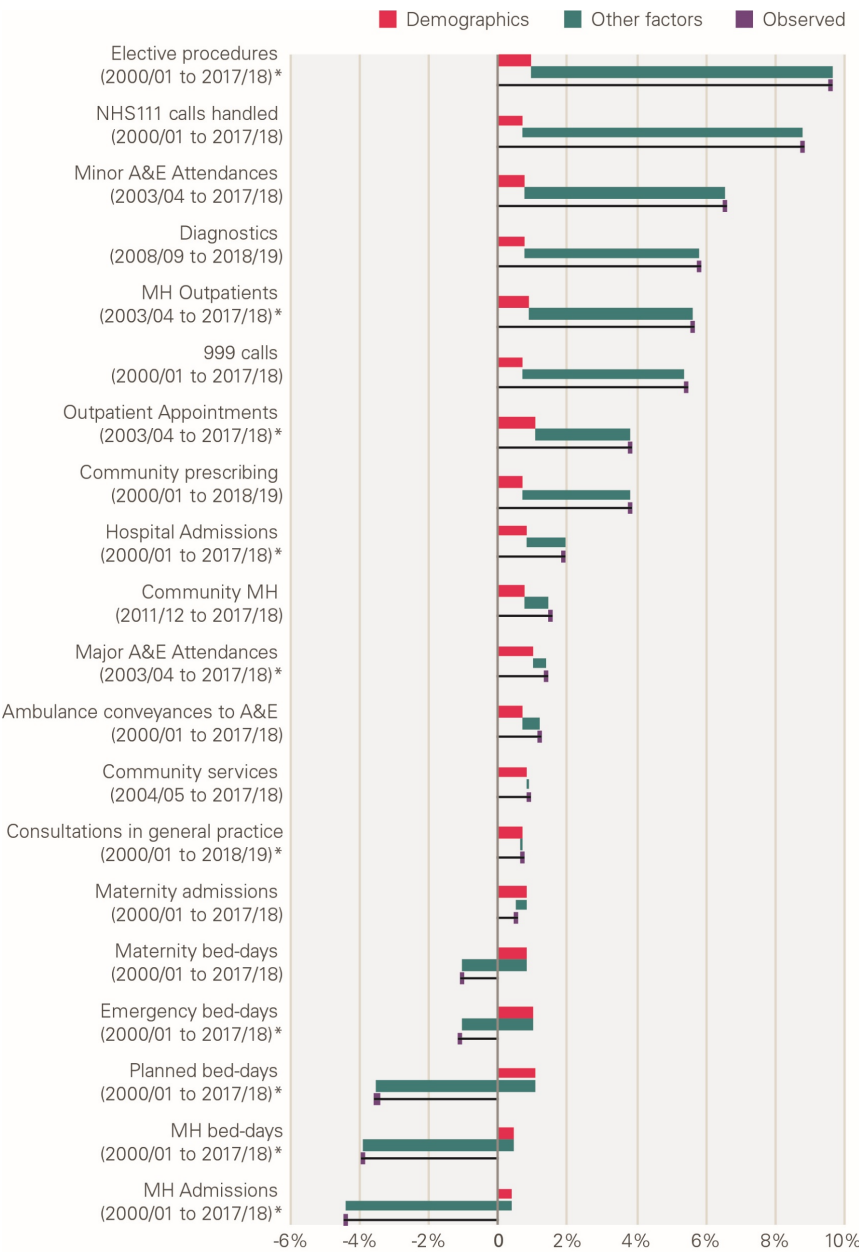
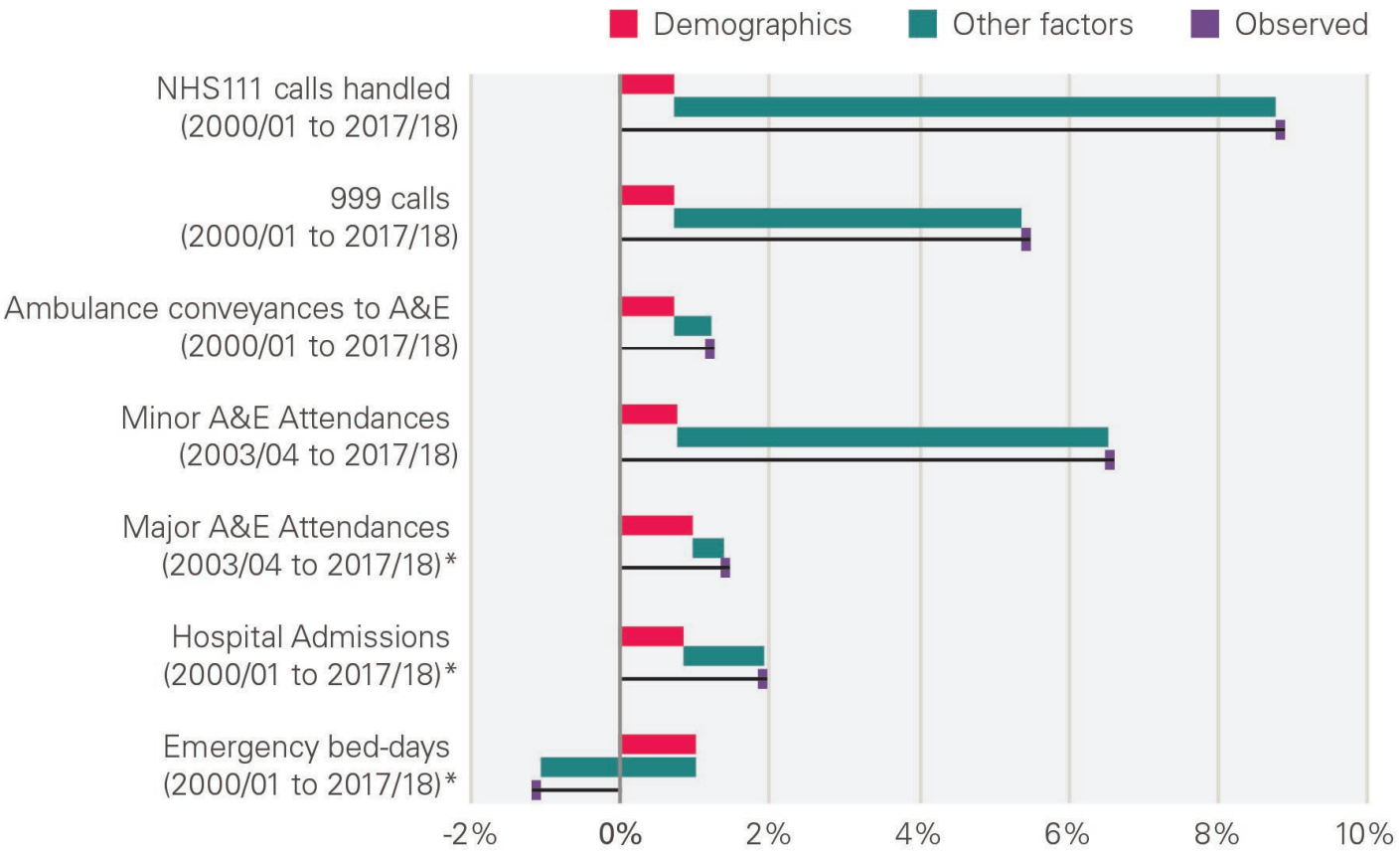


Figure 13: Annual growth for unplanned care services: projected by demographics, explained by other factors and observed



Note: NHS Direct was set up in 2000. The service was replaced by NHS 111 in 2010, although the transition to NHS 111 was not completed until 2014.

Figure 14: Attendances at major A&E departments by age and gender, rate per 1,000 (2017/18)

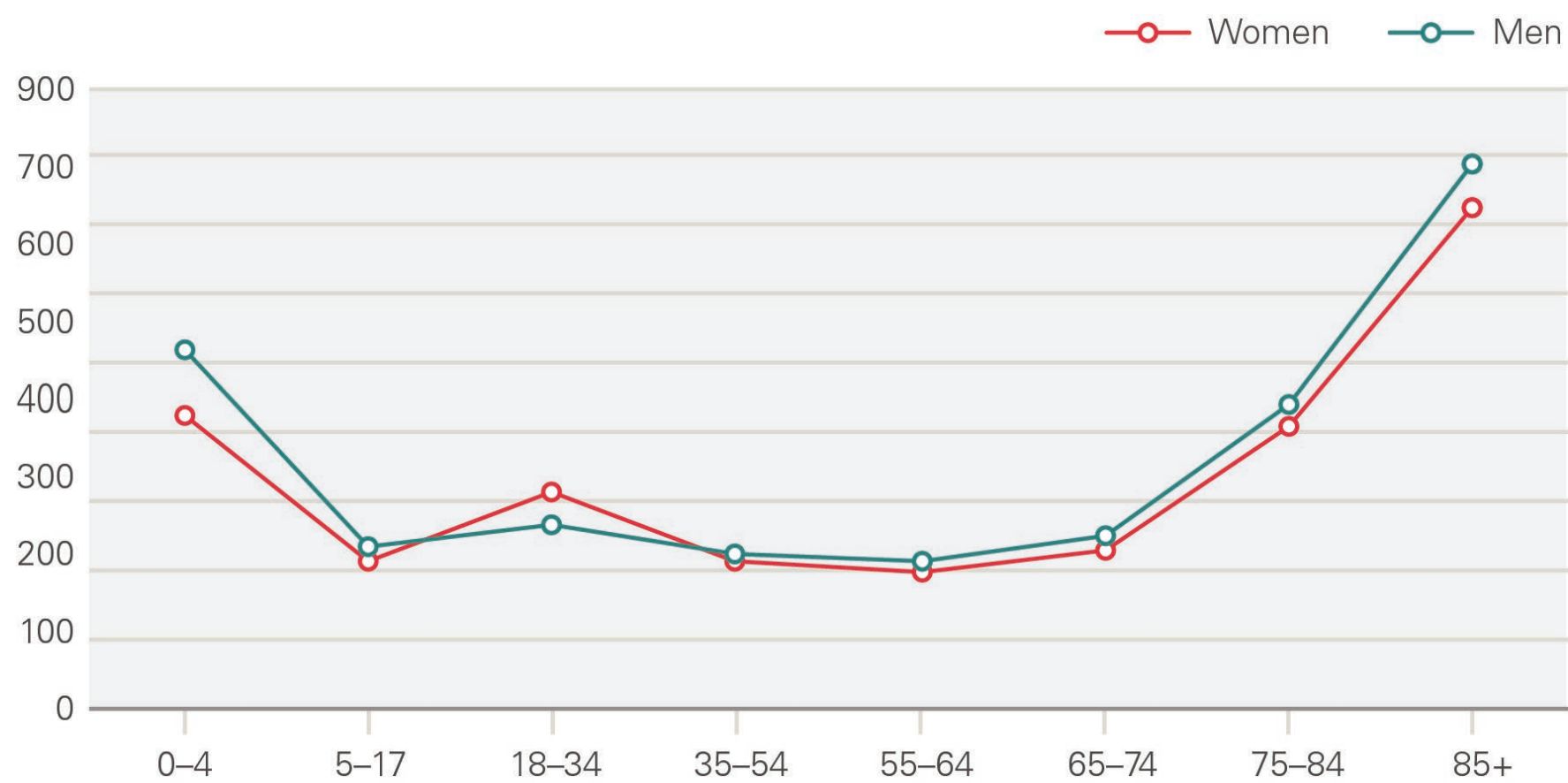


Figure 15: Annual growth in rate of attendances at major A&E departments by age and gender (2007/08 to 2017/18)

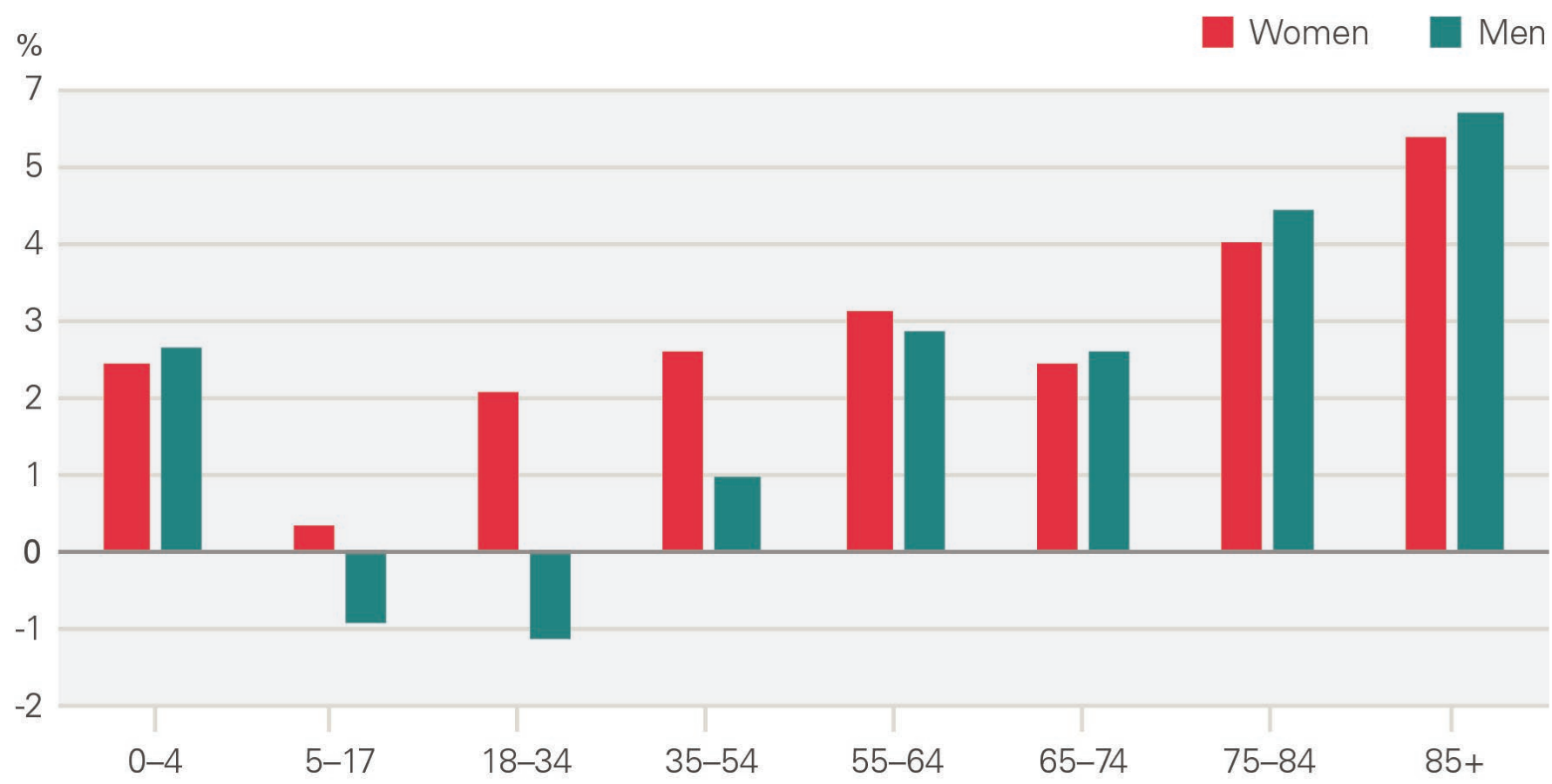


Figure 16: Emergency hospital admissions by age and gender, rate per 1,000 (2017/18)

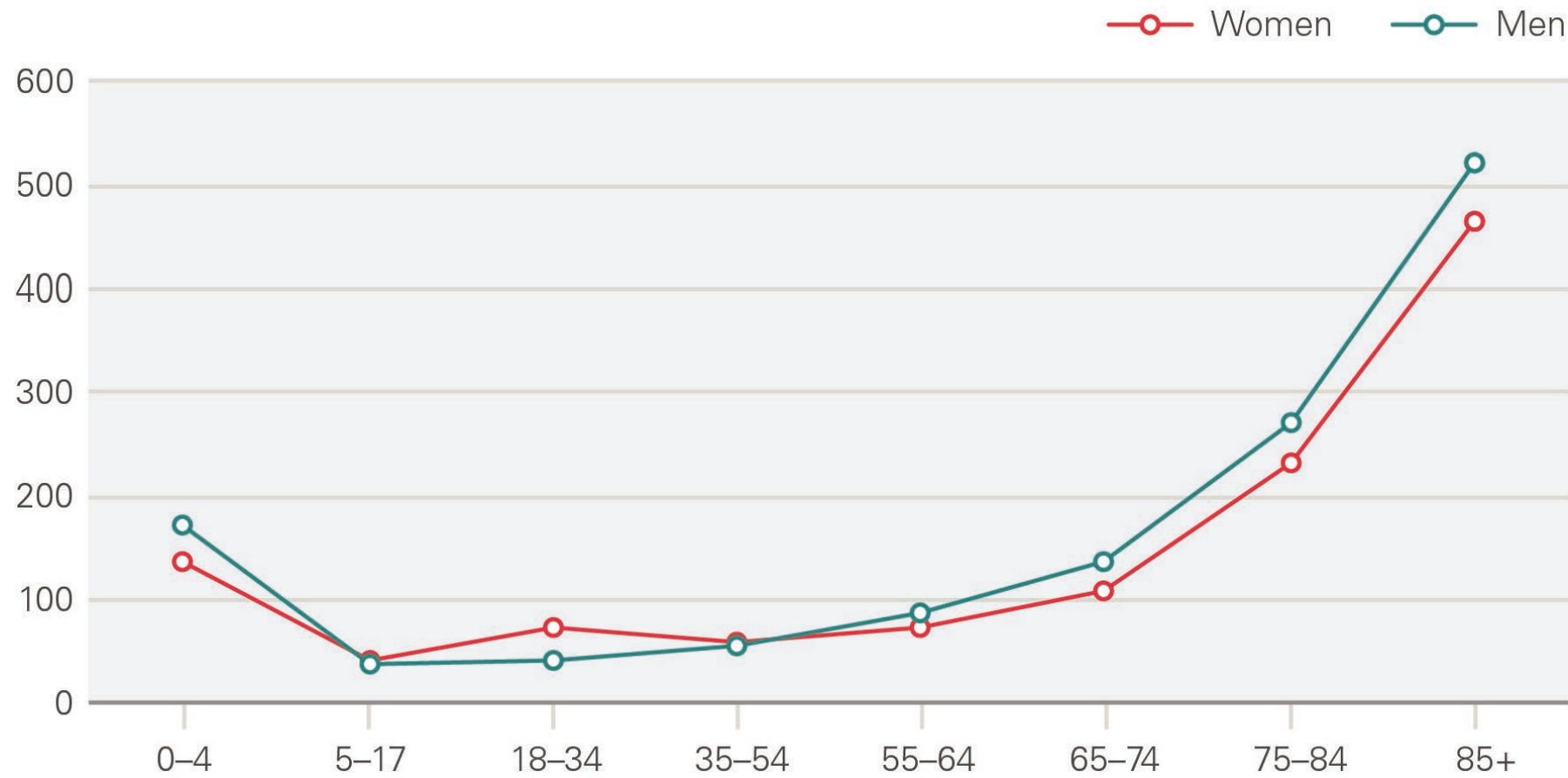


Figure 17: Annual growth in rate of emergency hospital admissions by age and gender (2000/01 to 2017/18)

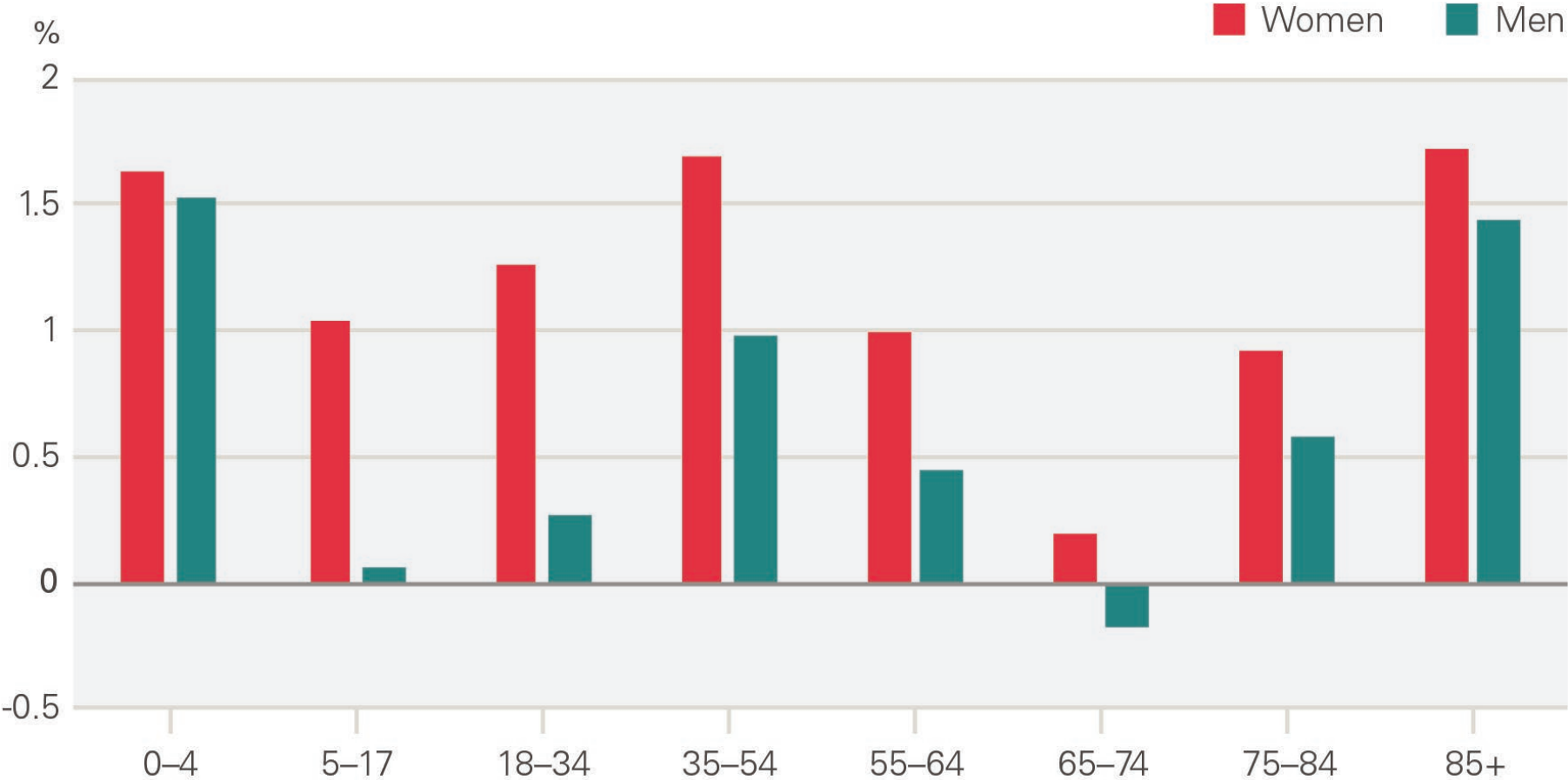


Figure 18: Annual growth for planned care services: projected by demographics, explained by other factors and observed

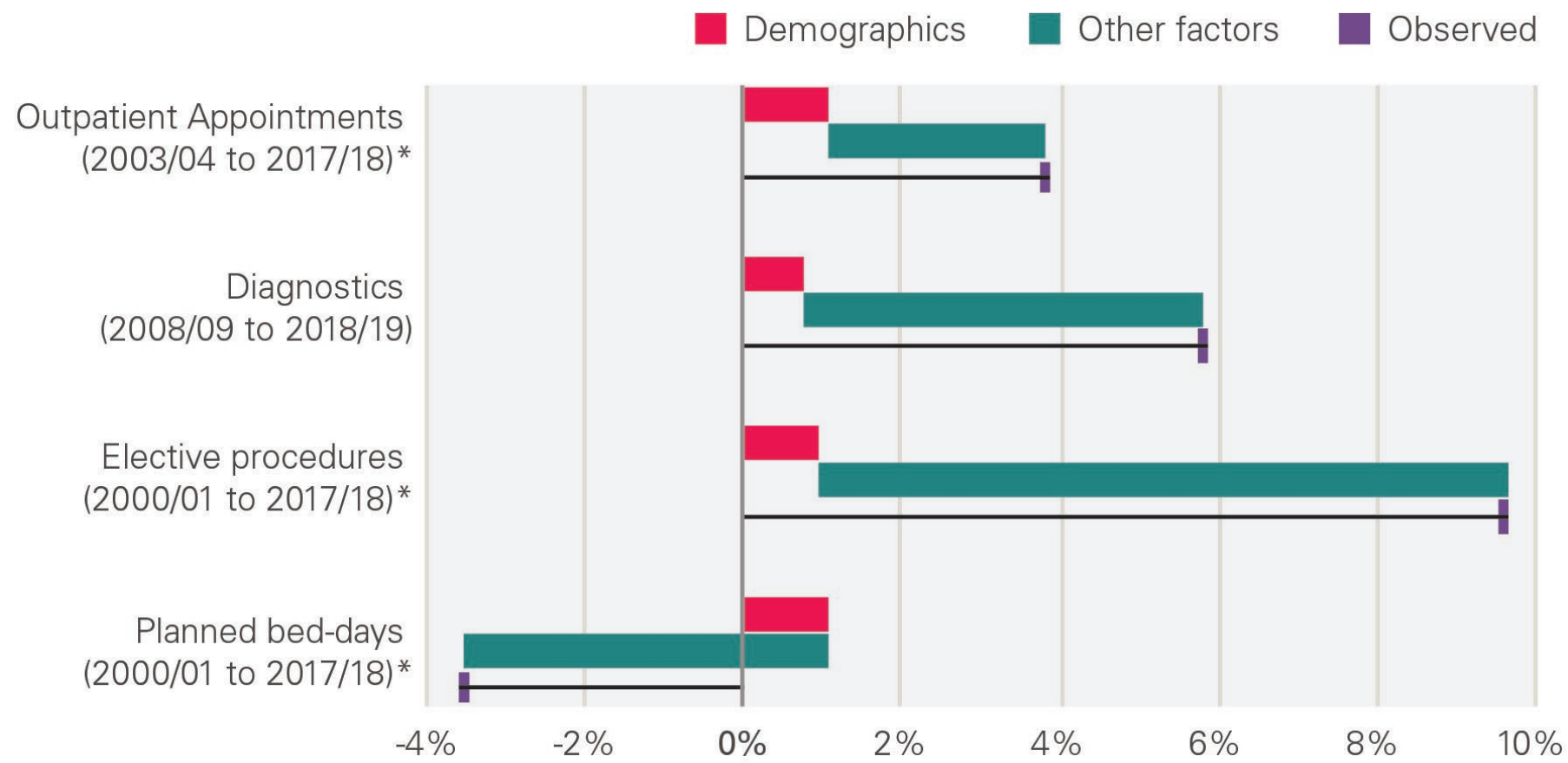


Figure 19: Outpatient appointments by age and gender, rate per 1,000 (2017/18)

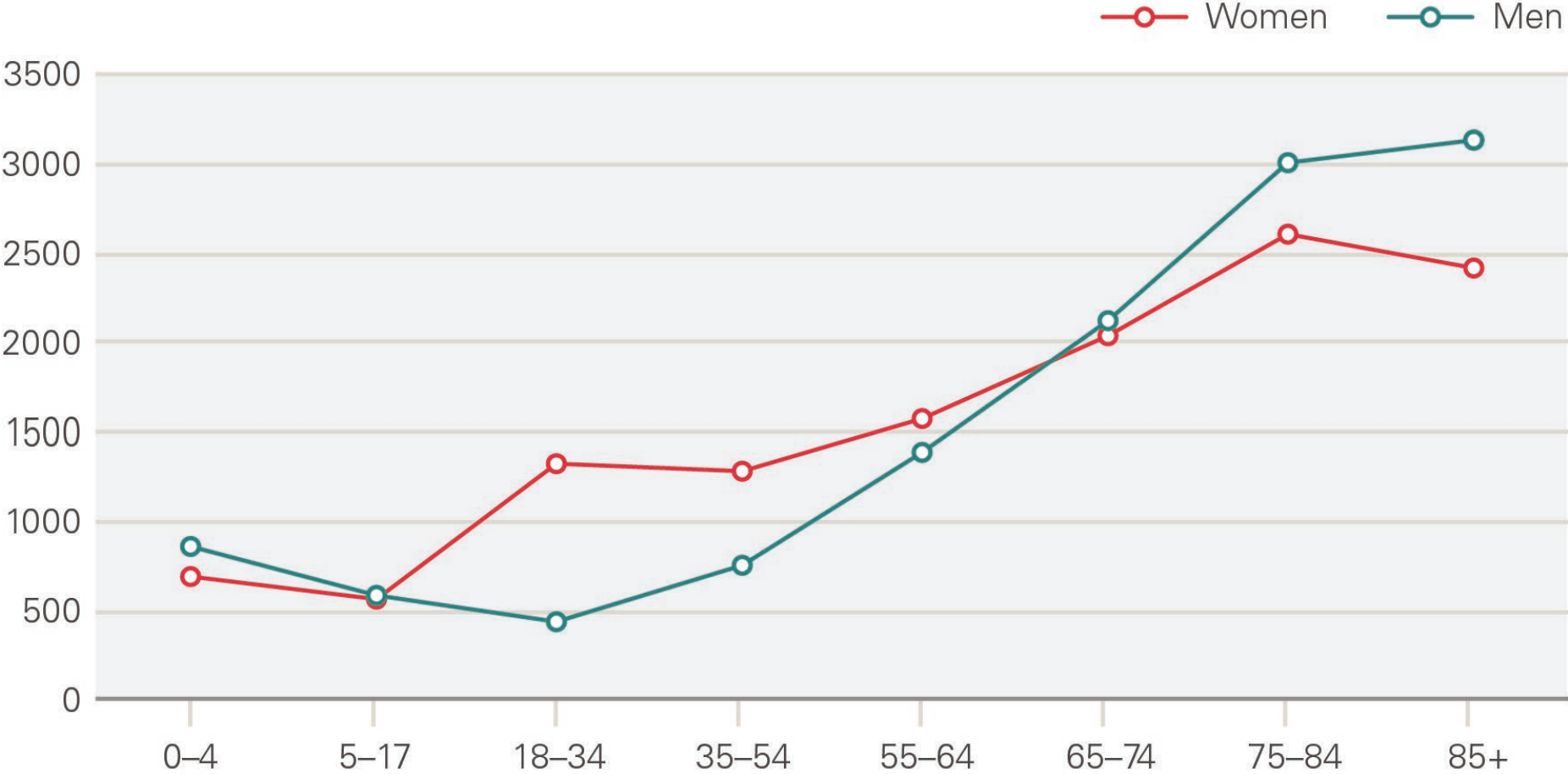


Figure 20: Annual growth in rate of outpatient appointments by age and gender (2003/04 to 2017/18)

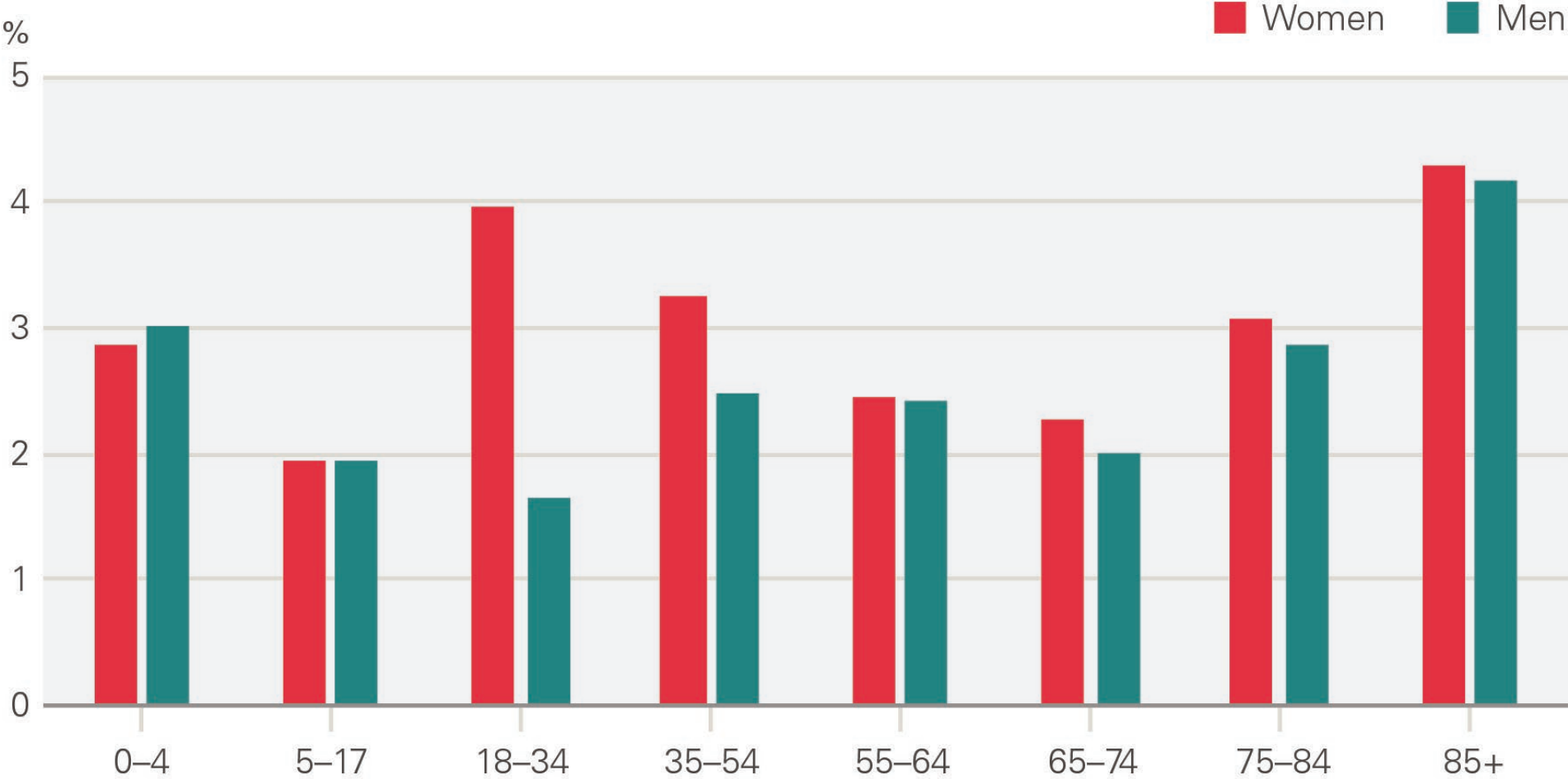


Figure 21: Elective procedures by age and gender, rate per 1,000 (2017/18)

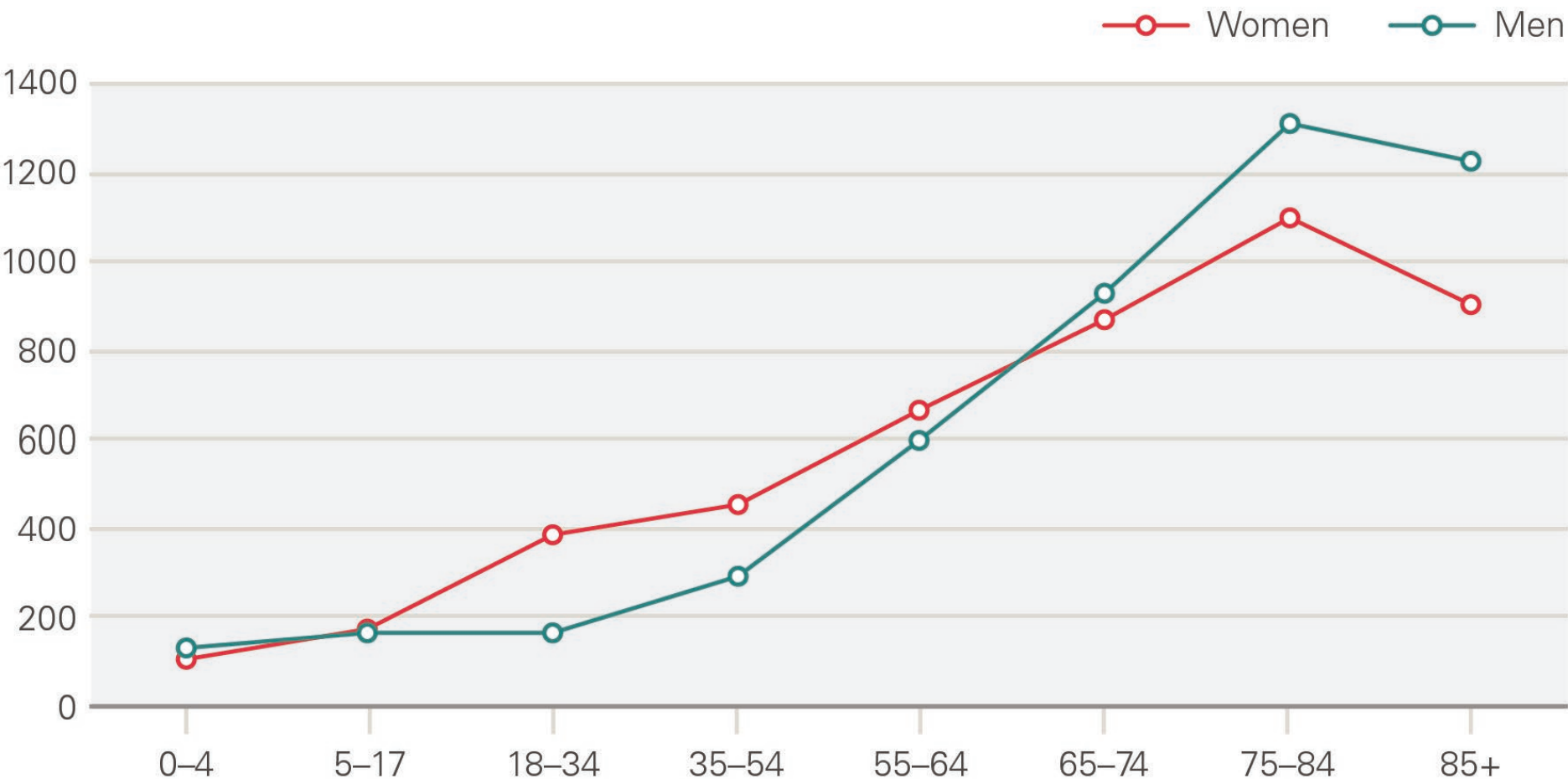


Figure 22: Annual growth in rate of elective procedures by age and gender (2000/01 to 2017/18)

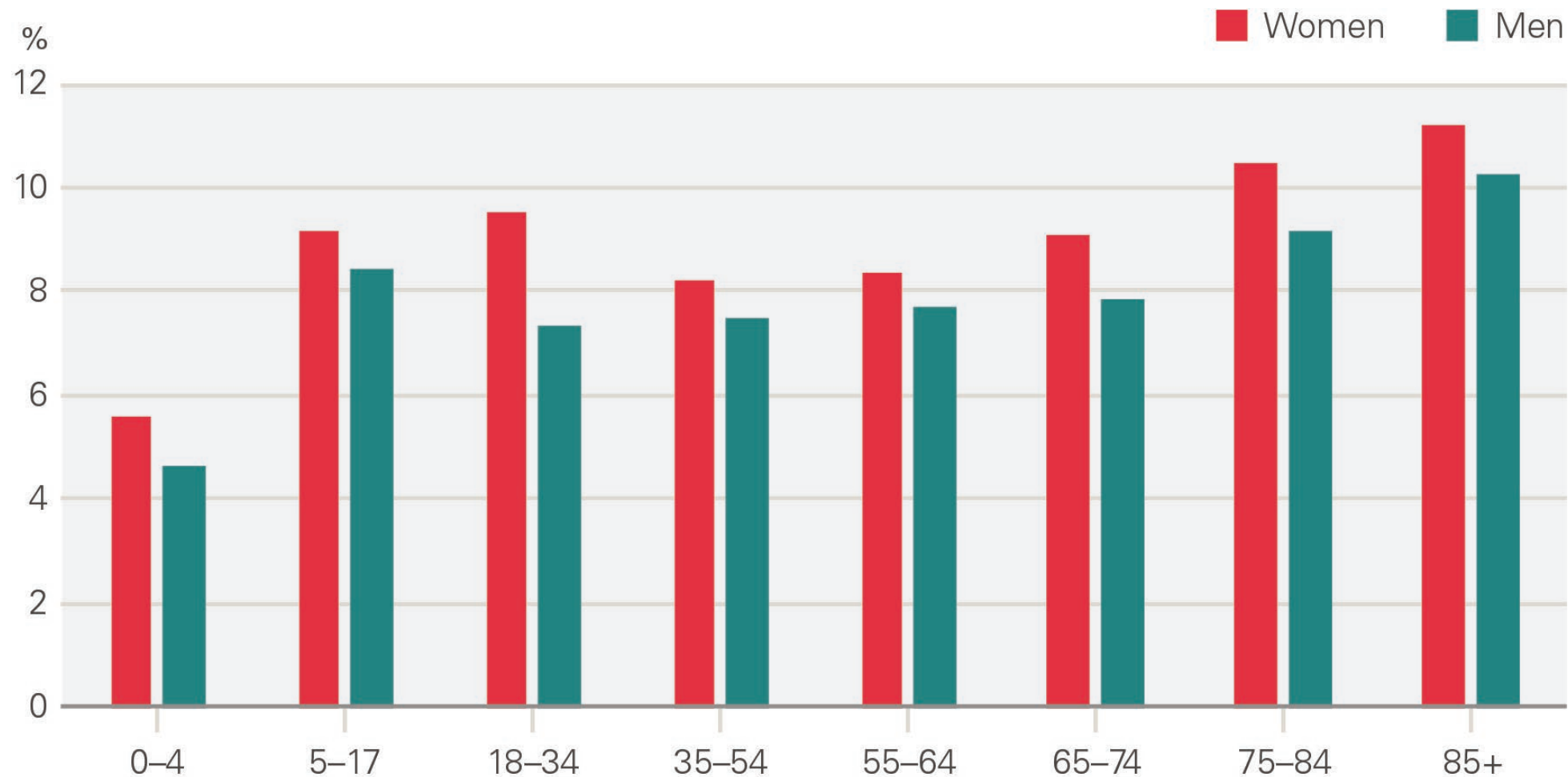


Figure 23: Share (%) of elective procedures, by type

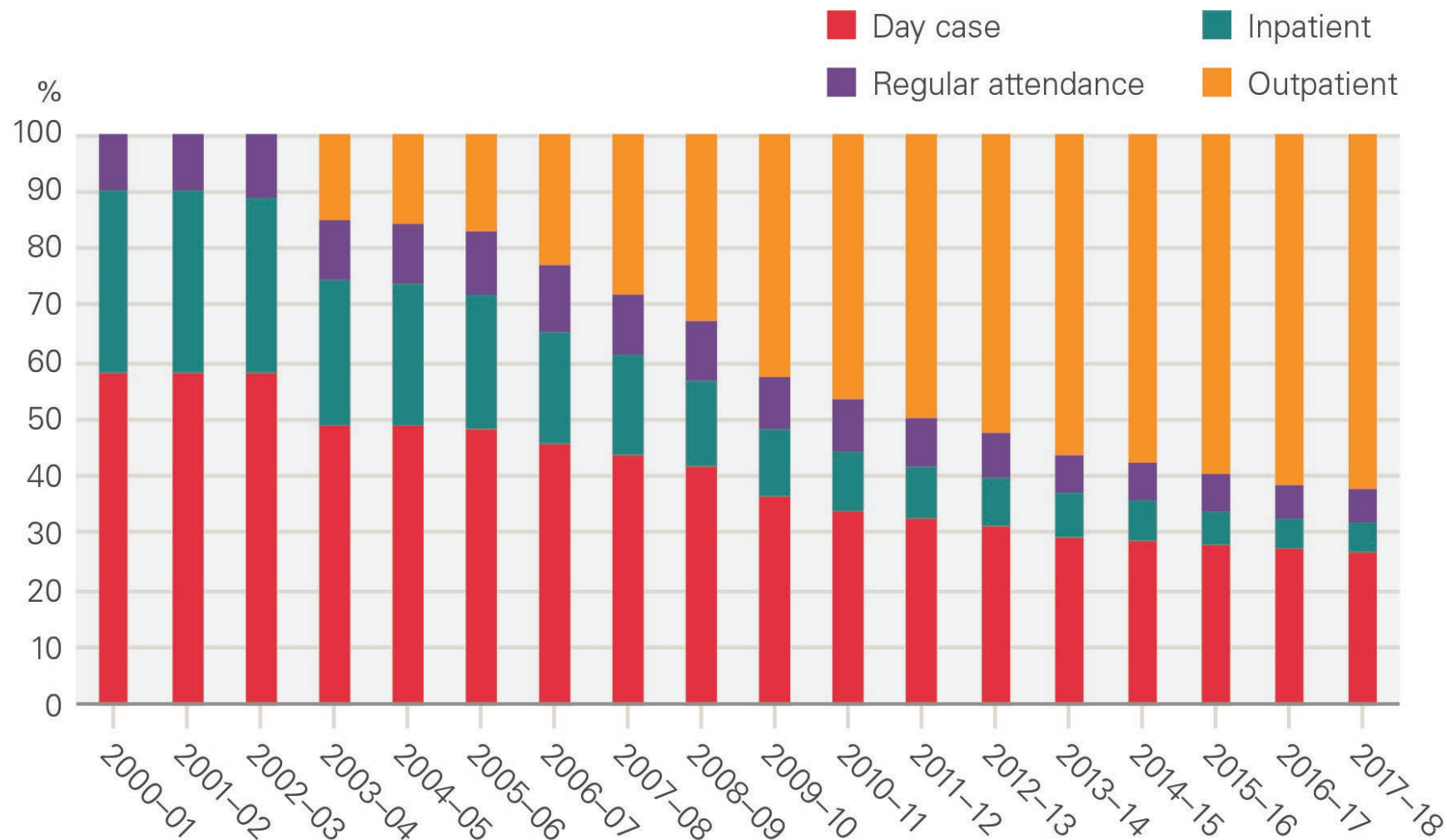


Figure 24: Annual growth for maternity admissions: projected by demographics, explained by other factors and observed

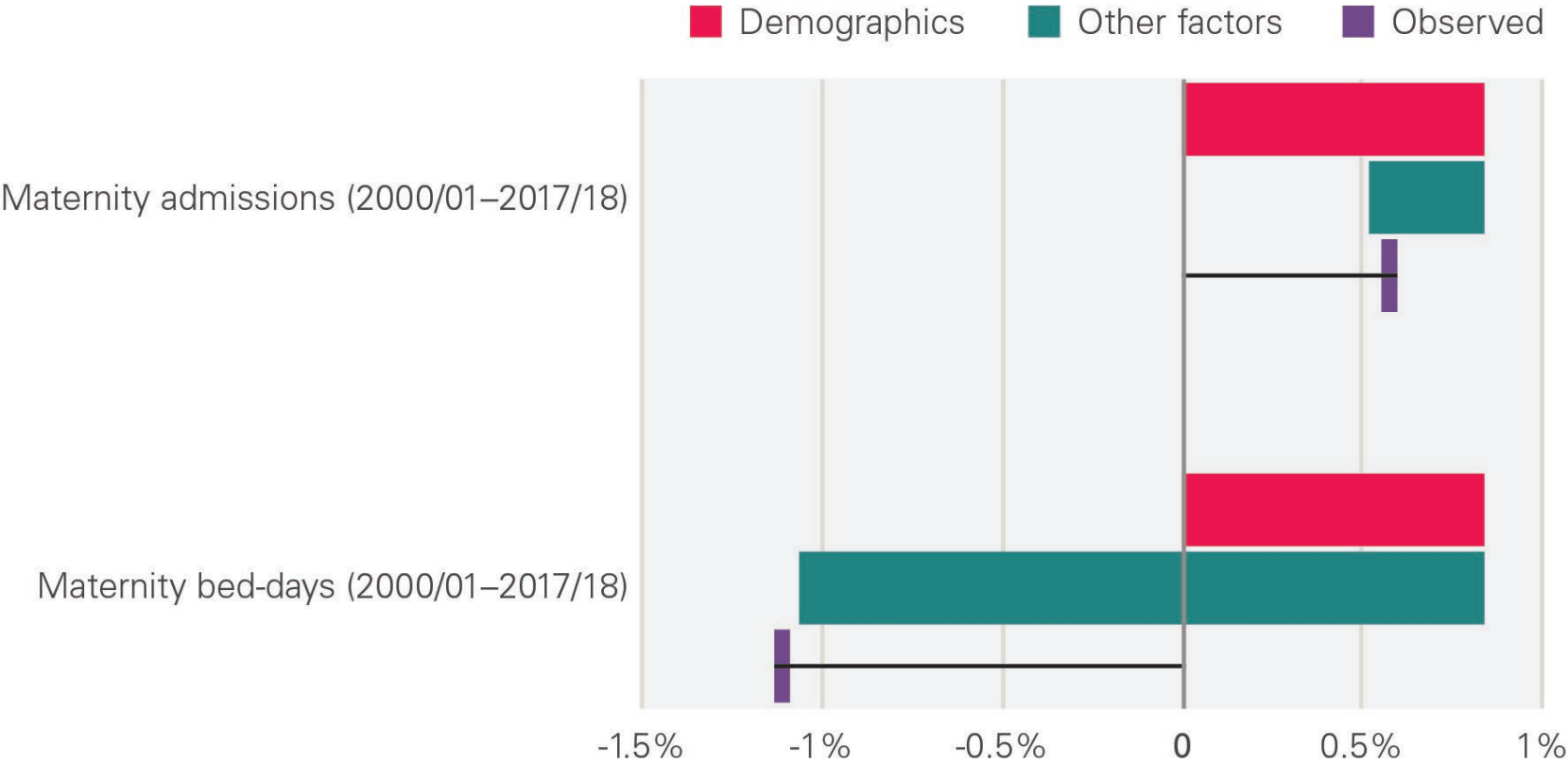


Figure 25: Annual growth for primary care and community services: projected by demographics, explained by other factors and observed

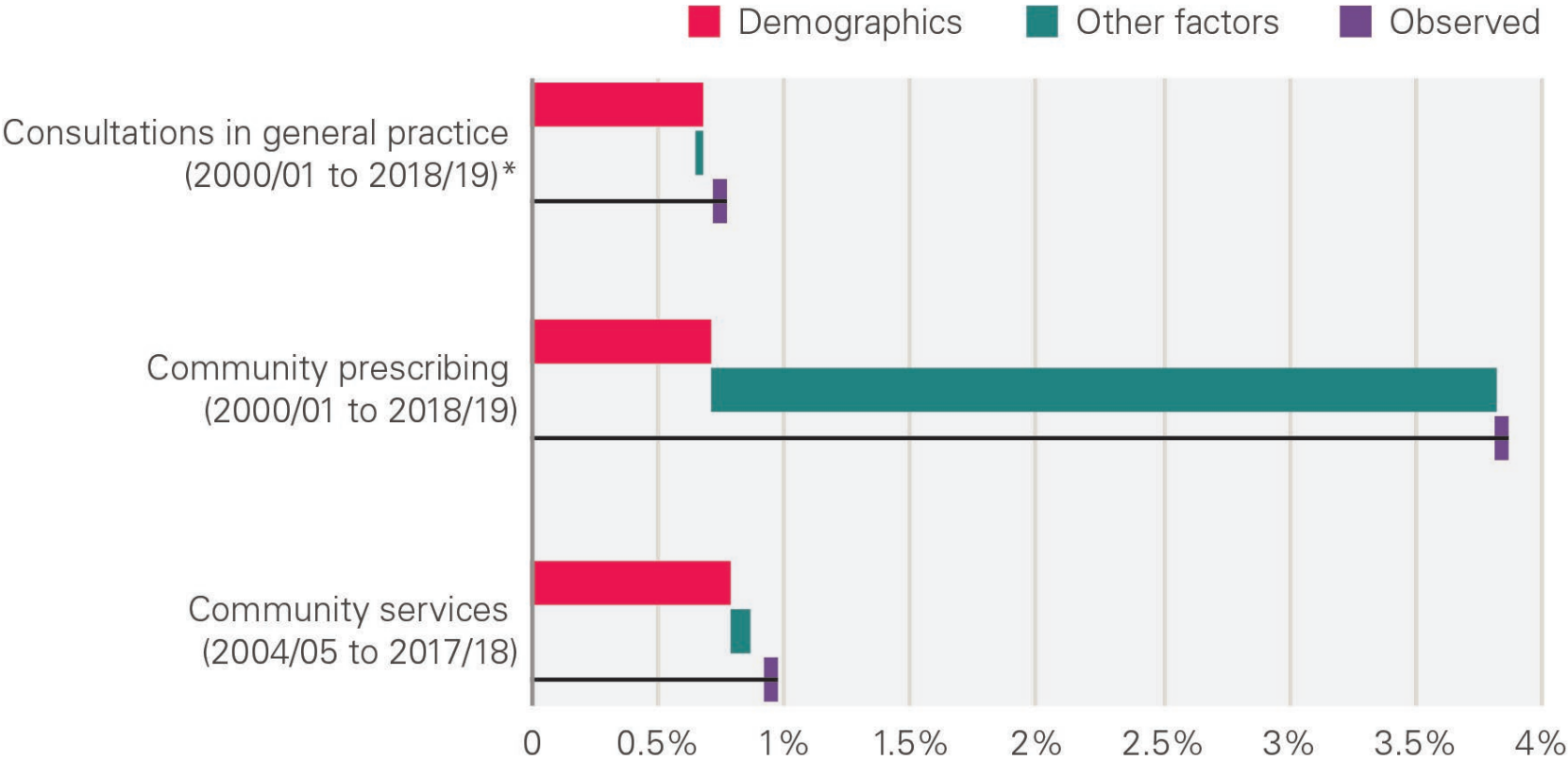


Figure 26: Consultations in general practice by age and gender, rate per 1,000 (2017/18)

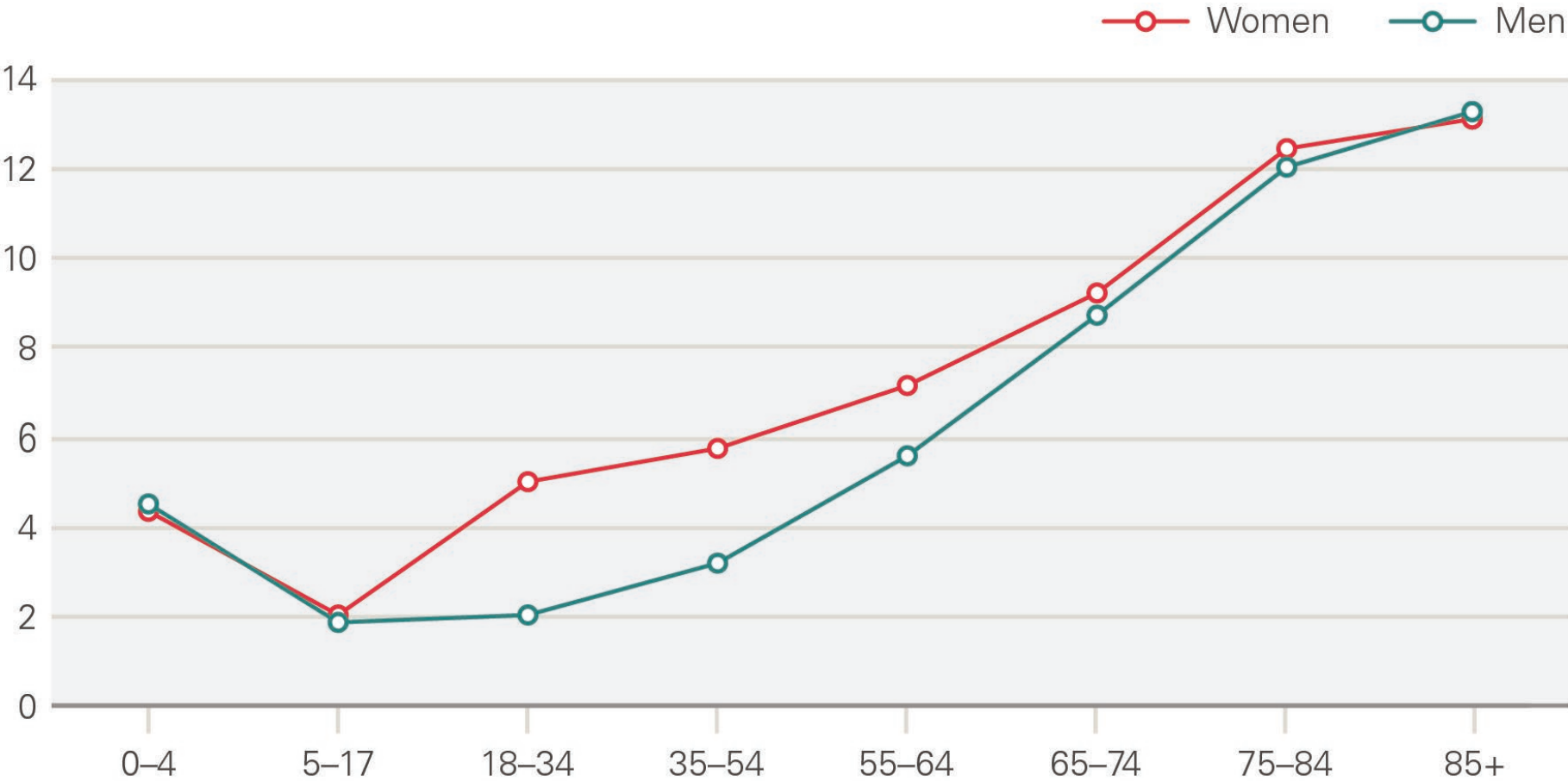


Figure 27: Annual growth in rate of consultations in general practice by age and gender (2000/01 to 2017/18)

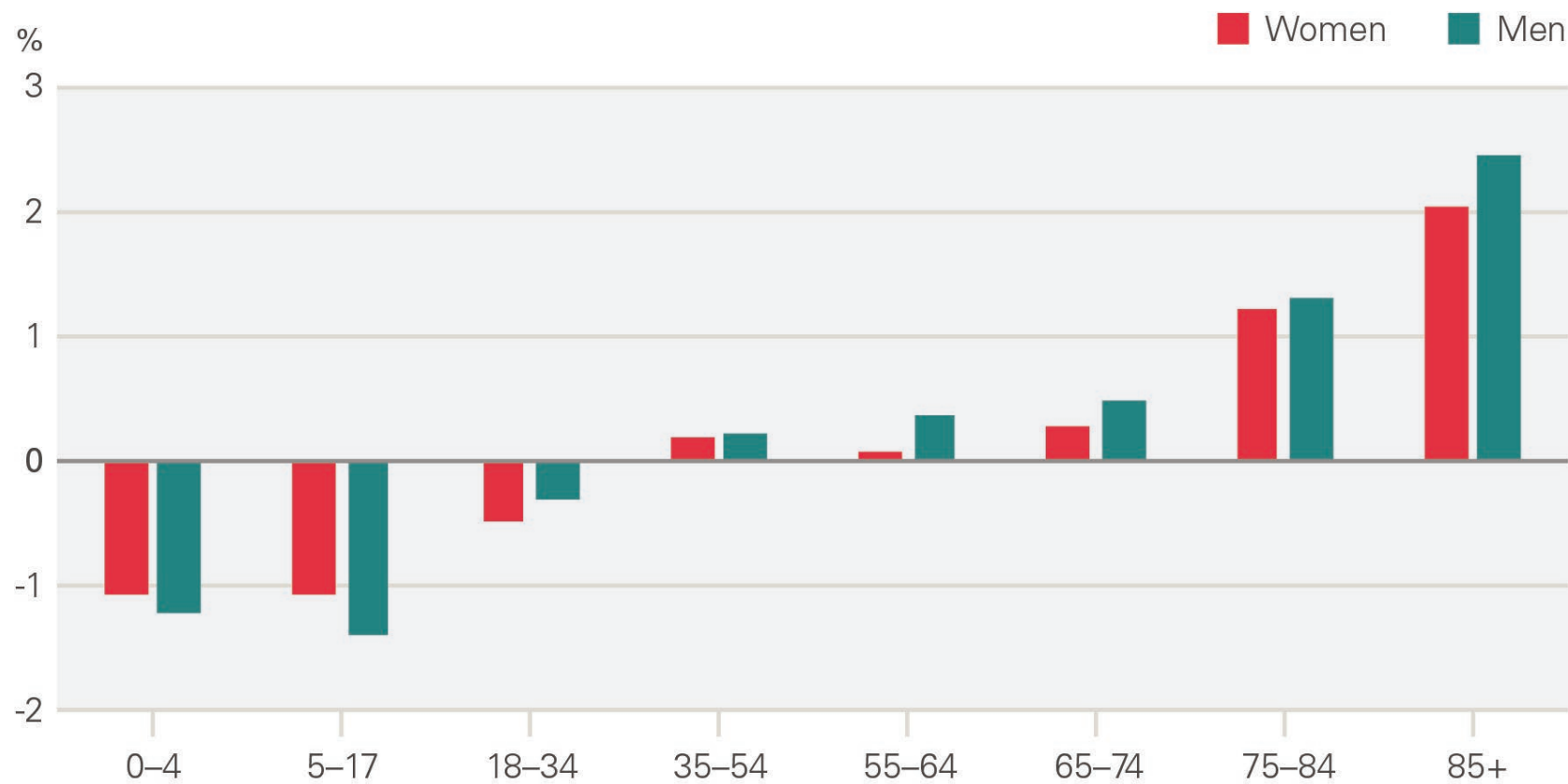


Figure 28: Change in number of prescriptions and total spend, 2008–2018

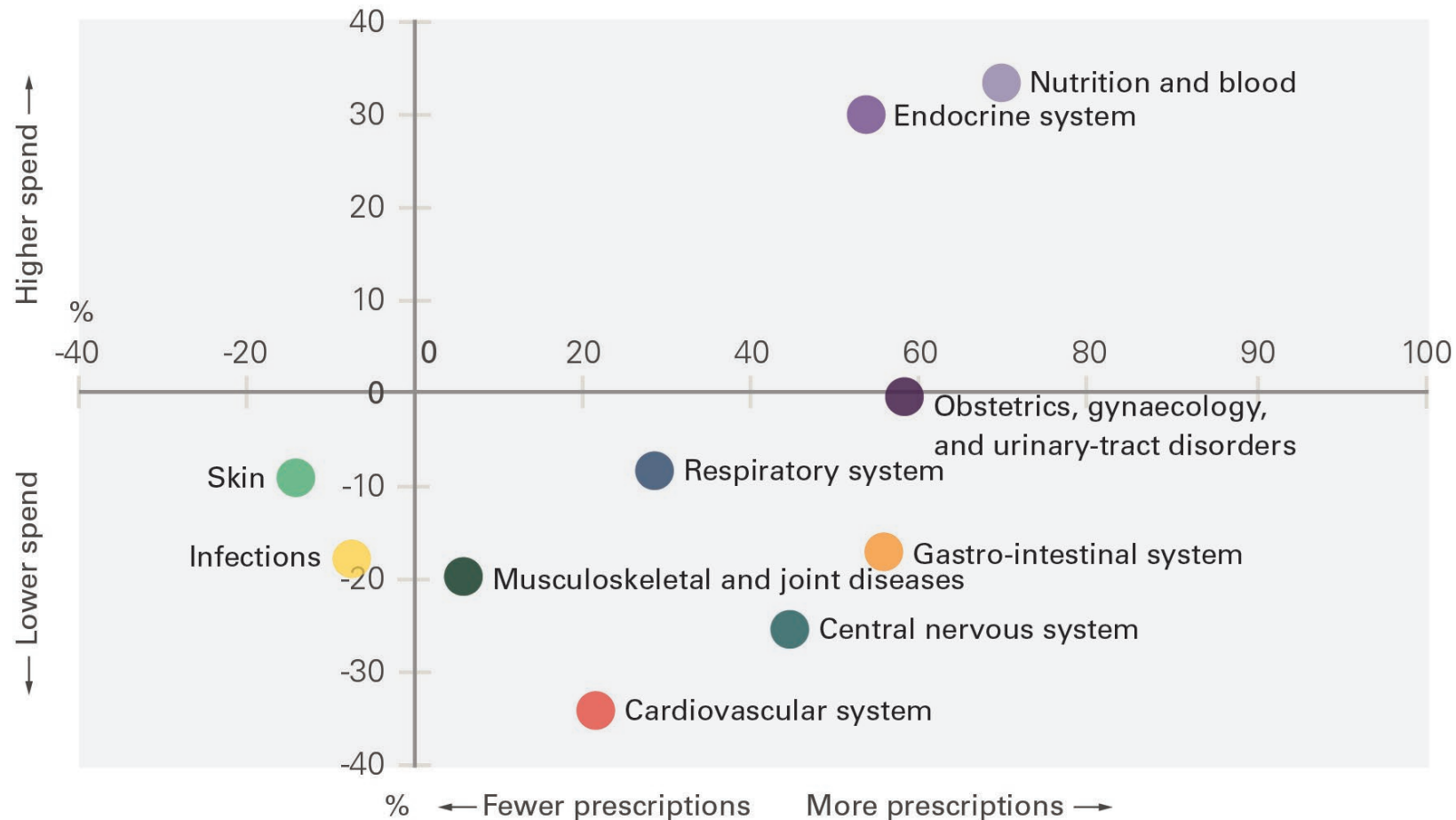


Figure 29: Annual growth for mental health services: projected by demographics, explained by other factors and observed

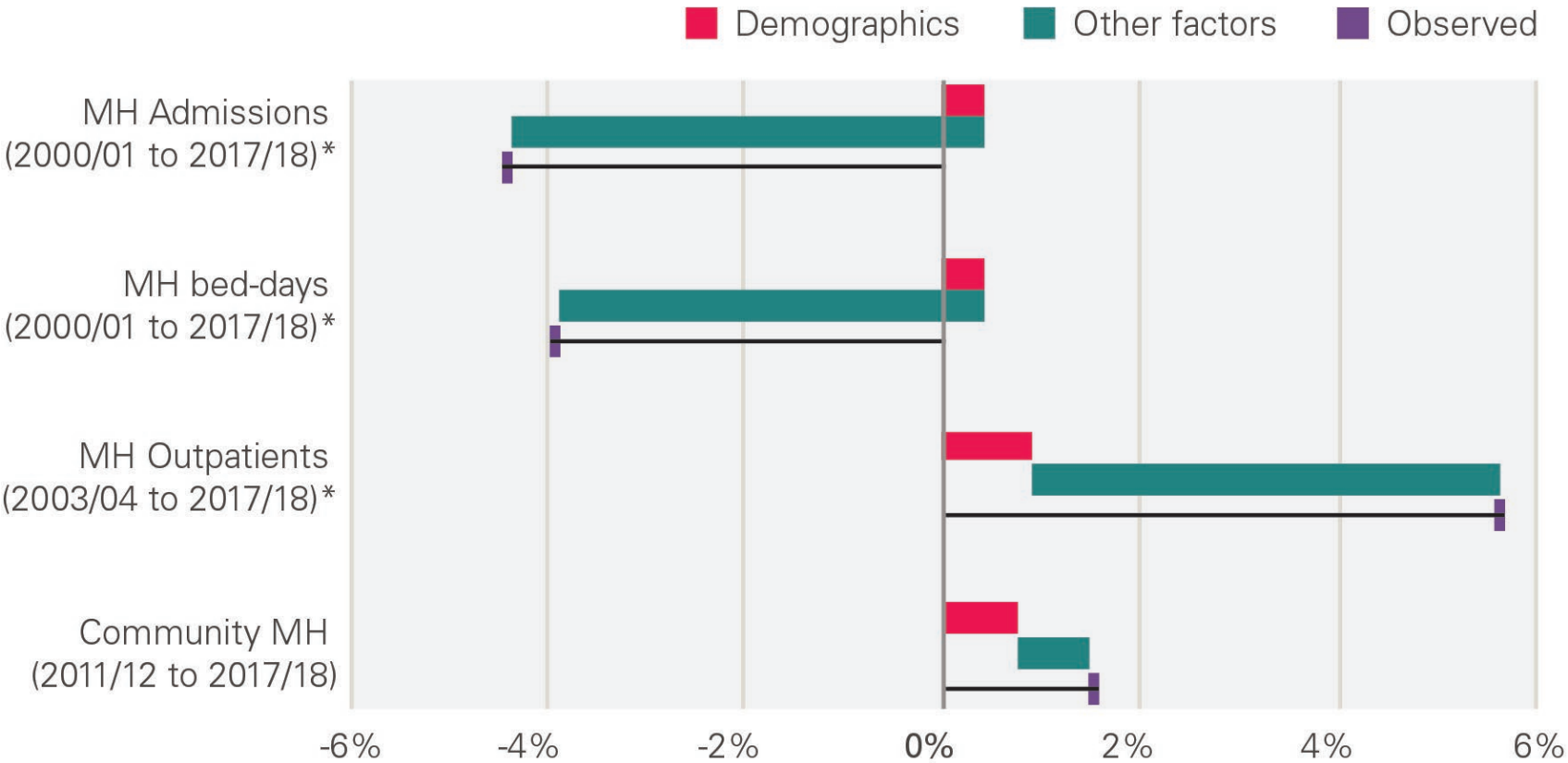
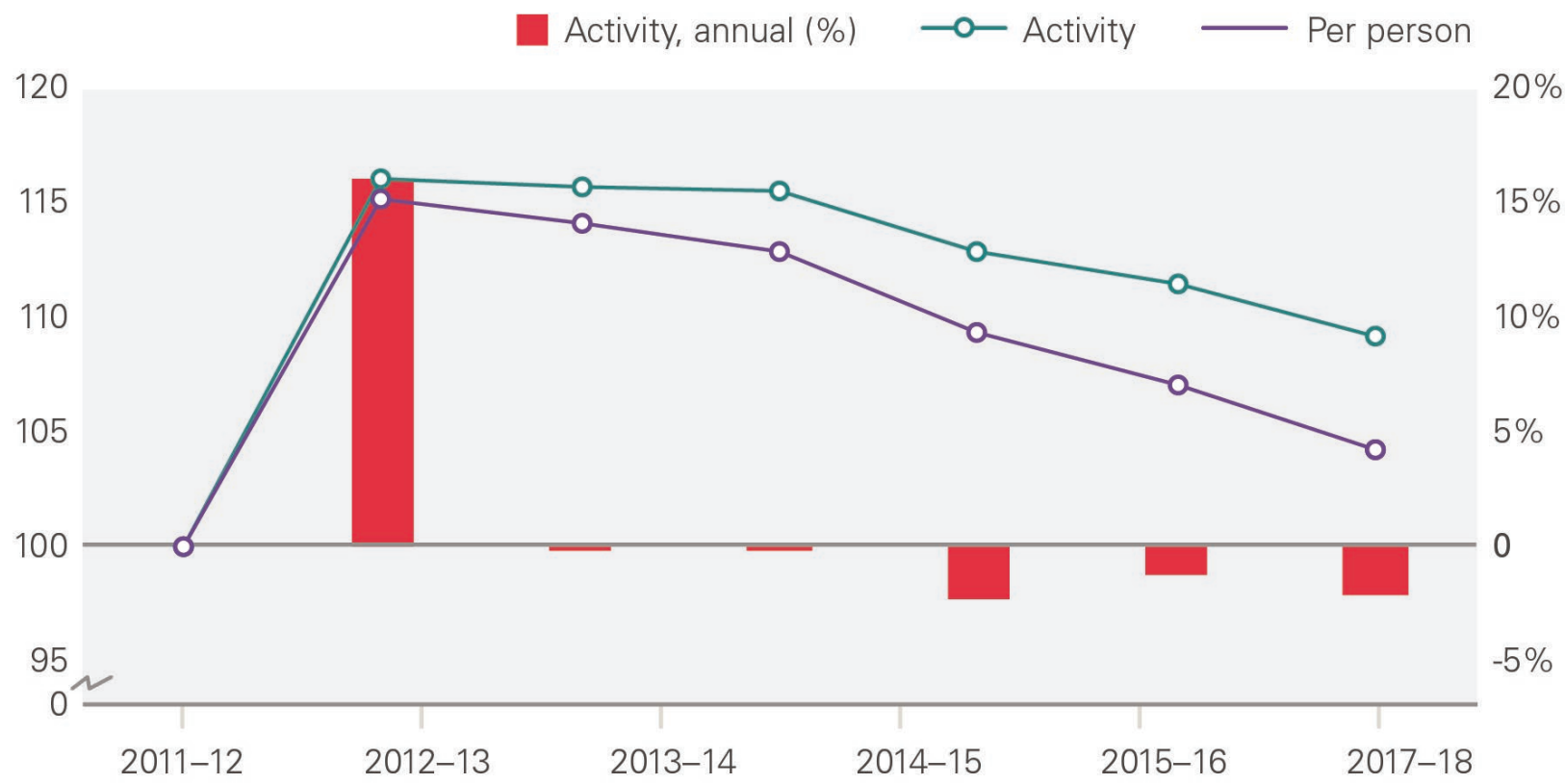


Figure 30: Community mental health services; activity and activity per person (index, 2011/12 = 100); annual growth in activity



Tables

Table 1: Quantity output growth, expenditure share and contribution to overall output growth by sector (2000/01 to 2017/18)

	Quantity output growth	Expenditure share			Contribution to overall output growth
	Annual average growth	2000/01	2017/18	Change (pps)	Annual average (pps)
Hospitals and Community Health Services	3.8%	60.1%	63.2%	3.1	2.3
Family Health Services	2.5%	16.3%	15.6%	-0.7	0.4
GP Prescribing	6.5%	19.0%	8.5%	-10.5	1.0
Non-NHS care	11.3%	4.6%	12.7%	8.1	0.9
Whole NHS					4.6%

Table 2: Activity, unit cost and total spend by health service (delivered by NHS) (2017/18)

Service	Volume (millions)	Unit cost (£)	Total spend (£m)
All A&E	20m	£160	£3,198m
Outpatient appointments	75m	£125	£9,316m
Diagnostic imaging	10m	£90	£941m
Planned procedures	21m	£556	£11,544m
Non-elective inpatient	10m	£1,726	£17,890m
Consultations in general practice	307m	£27	£8,182m
Community prescribing	1,106m	£8	£9,095m
Community health services	85m	£62	£5,252m

Table 3: Unplanned care services in 2017/18

Service	Activity	Estimated unit cost	Estimated total cost
Triage services and ambulance			
NHS 111 calls handled	14.6m	£12*	£179m
Calls to 999	10.2m	£7	£73m
Hear and treat or refer (help by phone)	806k	£37	£30m
Ambulance dispatches (treat on scene)	2.4m	£181	£443m
Ambulance conveyances to A&E	5.3m	£247	£1,306m
A&E attendances			
Attendances at major A&Es	15.4m	£188	£2,892m
Attendance at minor A&Es	4.5m	£67	£306m
Emergency admissions			
Emergency admissions to hospitals (non-electives) [†]	9.0m	£1,698	£15,282m

Table 4: Costs of planned care, 2017/18

Service	Activity	Estimated unit cost	Estimated total cost
Outpatient appointments*	74.5m	£125	£9,305m
Diagnostics			
Diagnostic imaging	10.5m	£90	£941m
Elective procedures			
Outpatient procedures	13.2m	£140	£1,841m
Regular attendance	0.3m	£327	£93m
Day cases	5.9m	£742	£4,404m
Electives†	1.3m	£4,023	£5,323m

Table 5: Cost of maternity inpatient care, 2017/18*

Service	Activity	Estimated unit cost	Estimated total cost
Elective – Maternity	12,500	£3,157	£39.5m
Non-elective (long stay) – Maternity	411,000	£3,686	£1,586m
Non-elective (short stay) – Maternity	818,000	£944	£771.9m

Table 6: Primary care activity and costs, 2017/18

Service	Activity	Estimated unit Cost	Estimated total cost
Consultations in general practice* (2018)	307m	£27	£8,182m
Community prescribing	1,106m	£8.20	£9,083m
Community services	88.3m	£62	£5,480m

Table 7: Mental health activity and costs, 2017/18

Service	Activity	Estimated unit cost	Estimated total cost
Hospital mental health			
MH elective and non elective finished consultant episodes (FCEs)‡	135,000	£1,886	£254m
MH outpatient appointments§	67,000	£167	£11.3m
Community mental health			
Specialist MH care (initial assessment)	874,000	£307	£268m
Specialist MH care	236m	£18	£4,227m
Adult IAPT (initial assessment)	781,000	£121	£95m
Adult IAPT	849,000	£353	£300m
MH care in secure facilities (initial assessment)	35,000	£870	£30m
MH care in secure facilities	1.4m	£521	£726m
Other specialist MH services	6.6m	£232	£1,535m

Source: NHS reference costs