

Health priorities for Spending Review 2021

The COVID-19 pandemic has had a profound impact on health, the NHS and social care. The Spending Review must address the pandemic's legacy and build resilience through continued investment in the following areas:



Public health grant

The public health grant plays a key role in improving health by funding vital services. Reversing cuts to the grant since 2015/16 and meeting need would cost an extra £1.4bn a year by 2024/25.

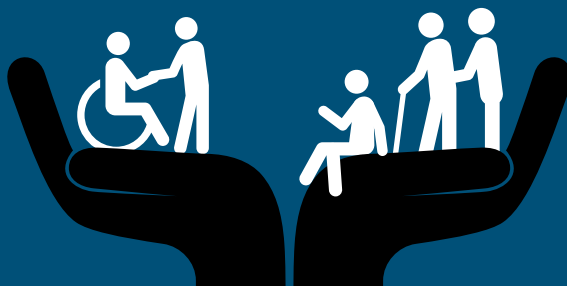


Workforce

Demand for health care workers is projected to increase further over the coming decade. The workforce training budget would need to rise to at least £5.5bn by 2024/25.

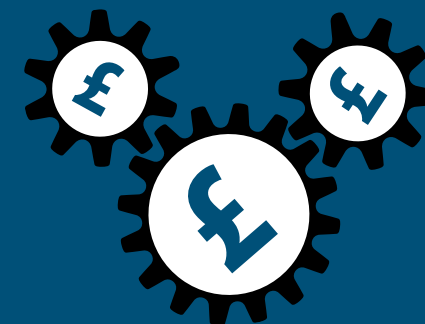
Social care

Social care needs additional investment by 2024/25 of £2.5bn just to meet demand, and £9.3bn to meet demand and improve the current system.



Capital

The capital budget finances long-term investments in buildings, equipment and technology. It needs to grow in line with the wider NHS budget and exceed £10bn by 2024/25.



Note: All figures are for England only. All growth rates are in real terms and absolute numbers are in 2021/22 prices (using the GDP deflator).