

# Independent evaluation of IMPACT: IMProving Adult Care Together

Webinar  
January 2022



Economic  
and Social  
Research Council

# Welcome



an independent charity committed to bringing about better health and healthcare for people in the UK



part of UK Research and Innovation and the largest funder of research on social and economic issues

Amanda Watt  
Research Manager



Shaun Leamon  
Research Manager



Allan Williams  
Evaluation Manager



# Introduction to the IMPACT Centre

# The challenge

- There is a need to catalyse use of high-quality evidence so that social care is delivered in ways that are most likely to be effective and to represent value for money.
- Social care staff often struggle to implement evidence-based innovations and improvements.
- Limited capacity in the sector to evaluate their innovations or improvements as they are developed.
- Difficulty sharing knowledge to spread and scale evidence-based innovations and improvements.

# To achieve the following aims:



Increase use of high-quality research evidence by adult social care staff when implementing innovations in social care, leading to enhanced care delivery and outcomes across the UK.



Build capability, where appropriate, among the workforce to identify and to evaluate innovations in adult social care, and at its interfaces with other services, including health, to inform local, regional and national policy and practice.



Improve connectivity across social care providers and staff, commissioners, innovators, people with lived experience of social care, academics and policymakers nationally and locally, to promote the better use of evidence into practice and support the adoption and spread of innovations in care.

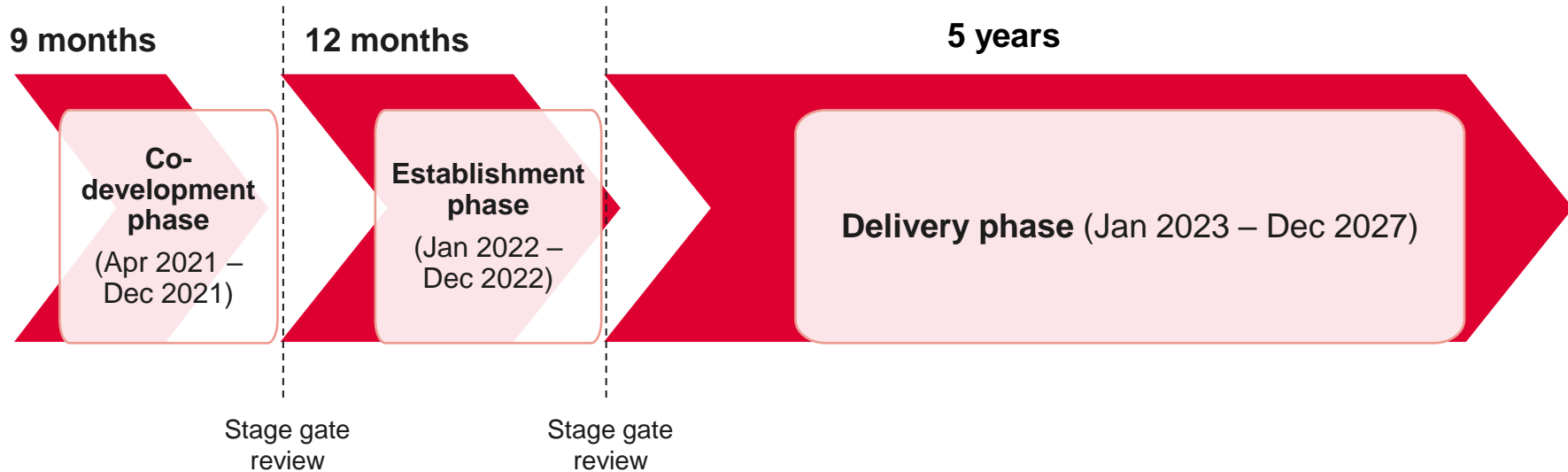


Improved understanding of behaviours and mechanisms that lead to, or prevent, the uptake and implementation of evidence across social care and the development of tested ways of addressing the barriers to uptake in different settings.

# IMPACT: IMProving Adult Care Together

- Led by Professor Jon Glasby at the University of Birmingham
- Leadership team comprises of academics, social care service users, policy and practice partners, and other stakeholders from across the sector and the UK
- IMPACT will be an **implementation centre** drawing upon
  - Research evidence
  - Lived experiences
  - Social care practice
- Work will be embedded **locally**, **regionally** and **nationally** across the UK
- <https://more.bham.ac.uk/impact/>.

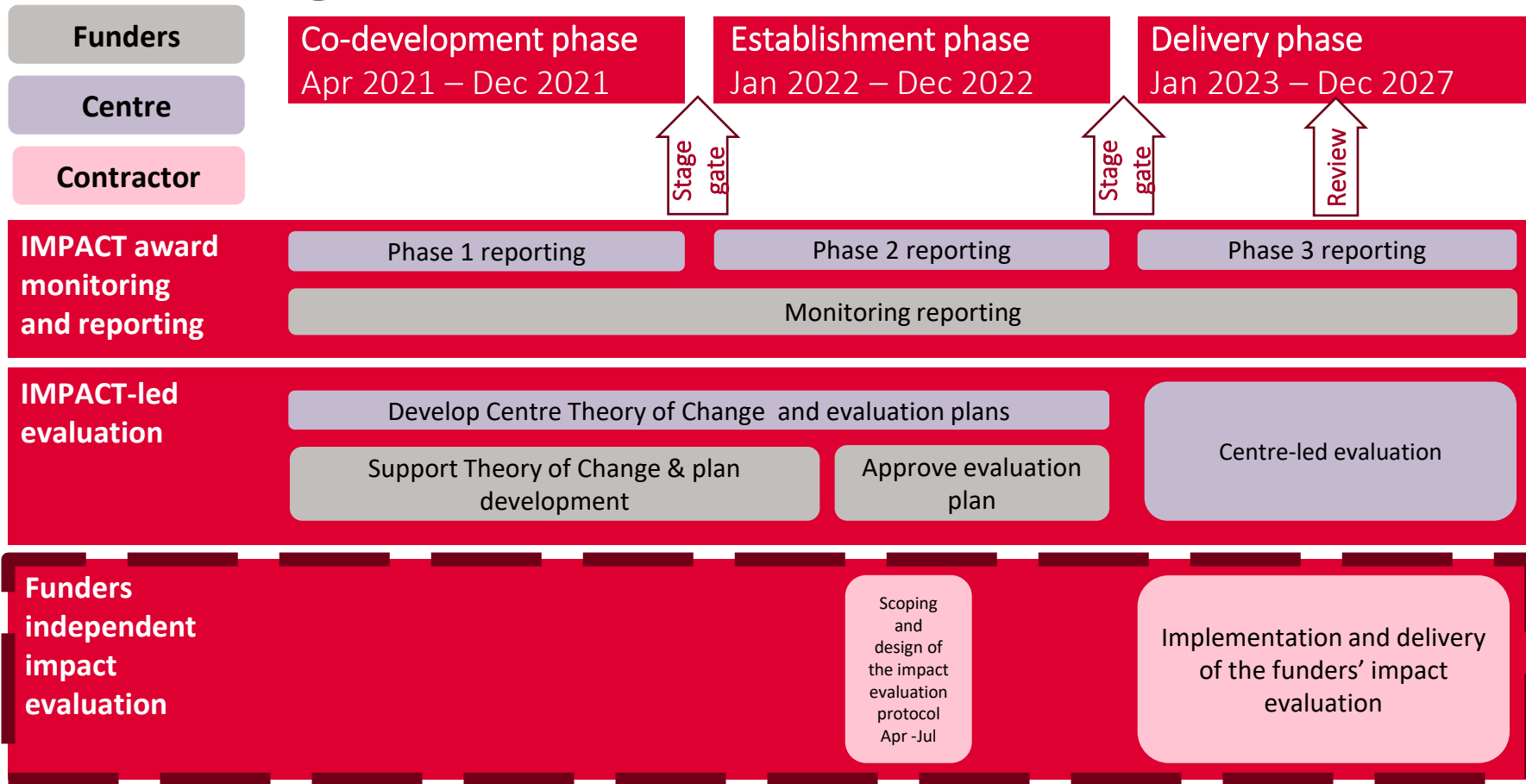
# Phases of the Centre



# Introduction to the evaluation



# Monitoring & Evaluation Framework



# Aims for the evaluation are to:

- Assess the overall impact of the Centre from the funders' perspective against its underlying Theory of Change and its four primary aims.
- Develop and share learning with the funders, IMPACT and wider system stakeholders about how investments of this size and scale can support better links between evidence, policy and practice.
- Develop valuable learning for the funders about how to implement evidence into practice in adult social care to help inform future funding strategies.

# Two stages of the independent evaluation

## Scoping and design of the impact evaluation protocol

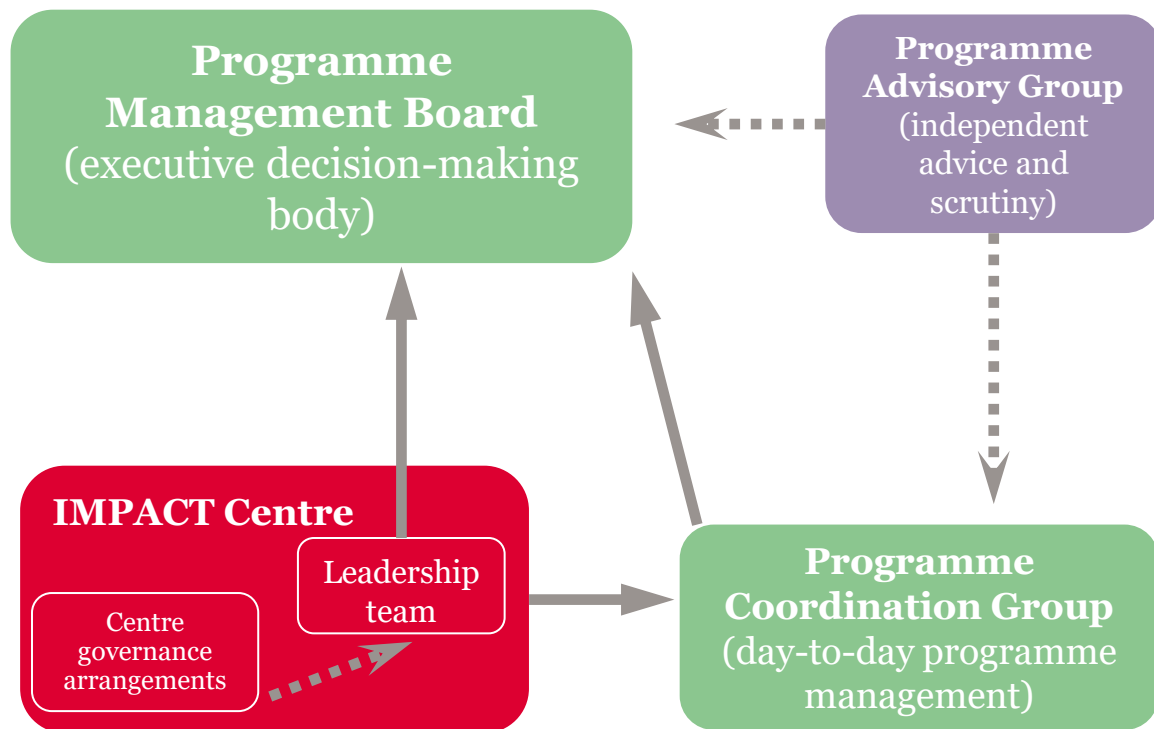
- Outline feasibility, scope and potential content of workstreams for the impact evaluation protocol
- Ensure the evaluation protocol aligns with the Centre's objectives and design principles

## Implementation and delivery of the impact evaluation

- Conduct robust, mixed-methods summative evaluation
- Analyse and synthesise the key findings into core lessons
- Produce mid-term and final report (and brief progress reporting)

# Working with us

- **Partnership approach** where possible
  - to be refined in inception meeting
- Main point of contact will be the Evaluation lead at the Health Foundation, who works closely with the **Evaluation lead** at the ESRC.
- The funders' evaluation leads will report into the PCG (as necessary).
- To attend up to **3 meetings** with the PAG and **2 meetings** with the PMB.
- We want to ensure **collaborative working** between all parties
  - avoid duplication of effort
  - reduce the burden of M&E reporting on Centre staff and stakeholders



Governance structure (as at **October** 2021)

How will we assess

# Essential criteria

- Experience evaluating complex interventions using qualitative and quantitative methods.
- Appropriate proposed methodology and sampling framework.
- Expertise in scoping, designing and delivering evaluations.
- Appropriate project management, risk management, information governance and quality assurance.
- Demonstrable capacity to deliver on time, on budget and to the required standard.
- Value for money.
- Ability to flex resources and adapt to changing environments when required.
- Ability to draw on other expertise if needed, and to work collaboratively with a range of stakeholders, including those with lived experience.
- Strong communication skills.
- Value for money
- Knowledge and awareness of external context in which IMPACT sits

How to apply

# Timetable

<b>3 March 2022</b>	<b>Applications close at midday</b>
w/b 21 March 2022	Shortlisted applicants invited for interview
30/31 March 2022	Interviews
w/b 4 April 2022	Successful provider notified
w/b 25 April 2022	Inception meeting
w/b 25 April 2022	Evaluation protocol finalised; contracting



Q & A

# Questions

- Can you provide more information on your expectations for the main stage evaluation? The ITT indicates that it will involve mixed-methods (quant and qual) work, but could you say more on what your expectations would be and what data might be made available to the evaluator?
- Do you anticipate the IMPACT-led evaluation and Funders' independent impact evaluation overlapping or duplicating?
- Is there a different audience for the IMPACT-led and the Funders' independent impact evaluation?
- Will there be an opportunity for asking further questions after today?
- Will any specified contract review meetings be accompanied by budget reviews as the needs of the evaluation emerge over time?

Visit our webpage to download our full guidance

Register on AIMS and submit your tender by 12.00 GMT on 3 March 2022

Ask us any further questions: [Amanda.Watt@health.org.uk](mailto:Amanda.Watt@health.org.uk)

# Thank you



Economic  
and Social  
Research Council