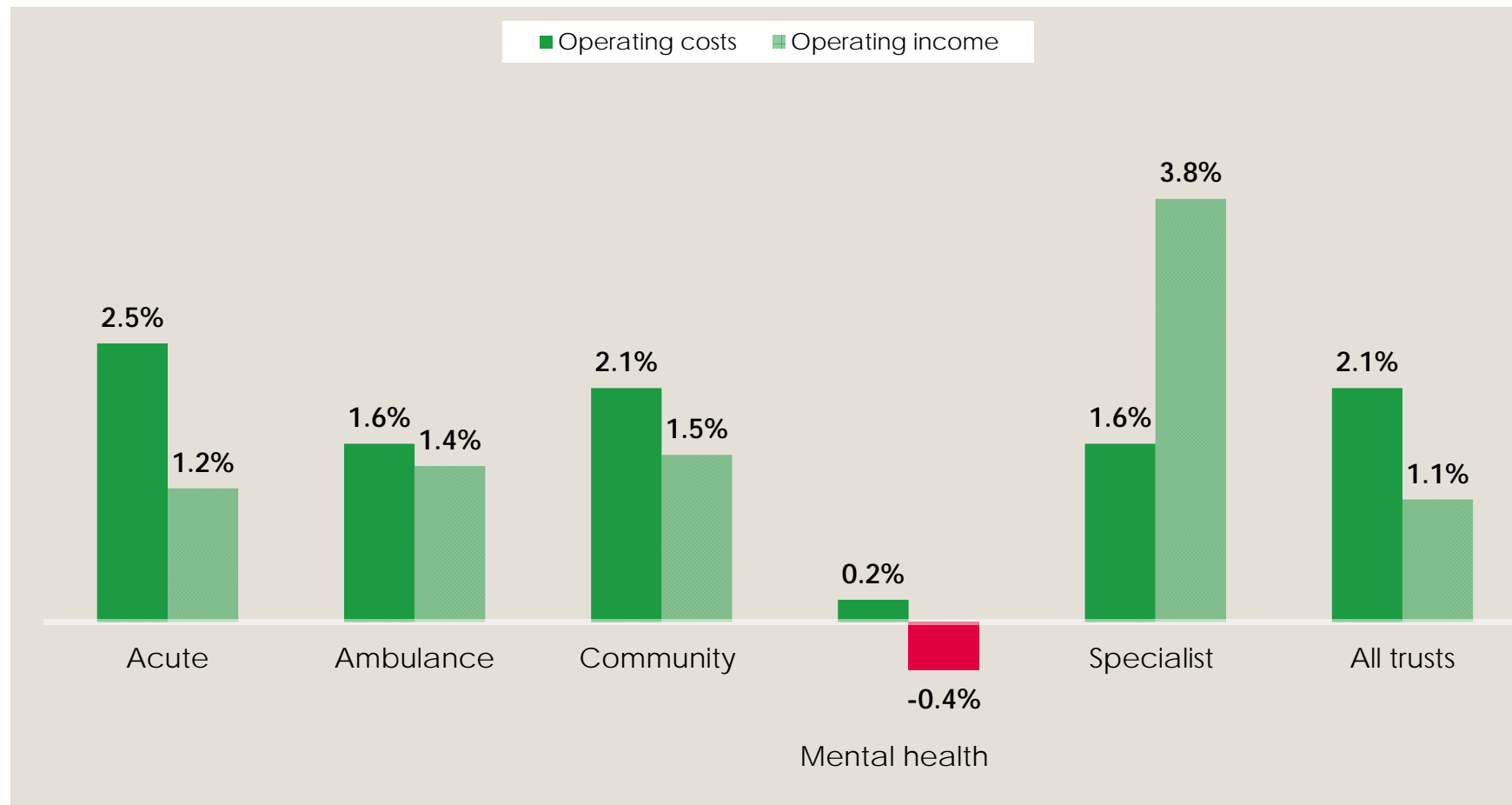


Hospital finances and productivity: in a critical condition?

Charts and figures from the
research report

April 2015

Figure 1: Annual percentage change in operating income and cost in 2013/14 by type of trusts, real terms



Source: Health Foundation analysis using trusts' financial accounts

Note: These figures exclude the operating costs and income of NHS Direct. In 2013/14, NHS Direct operating income was £78.9m and operating costs were £109.5m, as reported in NHS Direct's financial accounts

Figure 2: Number of NHS trusts in deficit in 2012/13, 2013/14 and Q3 2014/15

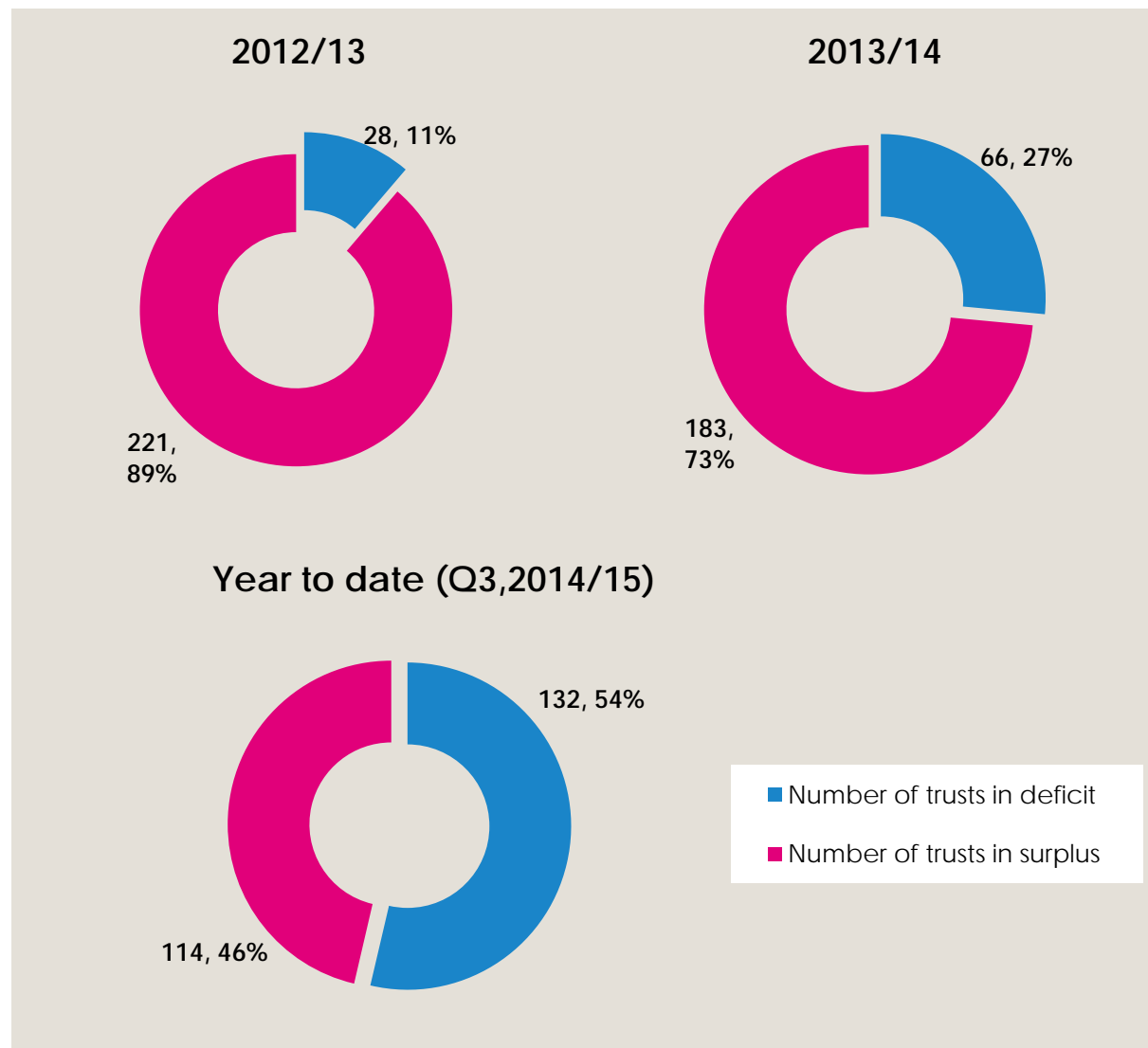
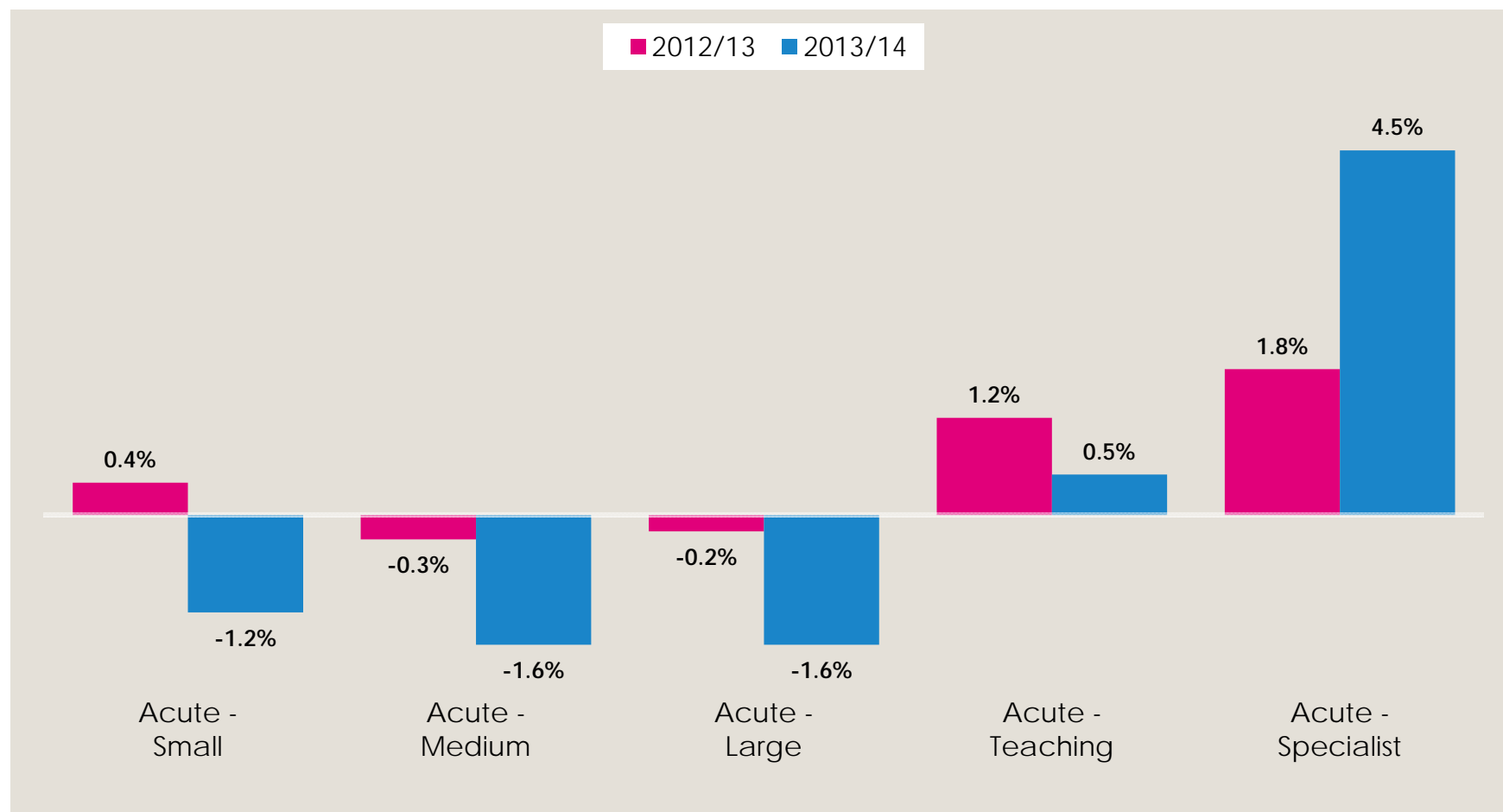


Figure 3: Variation in adjusted net surplus/deficit as a proportion of operating costs across acute trusts, by type, 2012/13 to 2013/14, real terms



Note: Types of acute trusts have been grouped into small, medium, large and acute teaching trusts, based on DH classification.

Figure 4: Adjusted financial performance of NHS providers in England in 2013/14

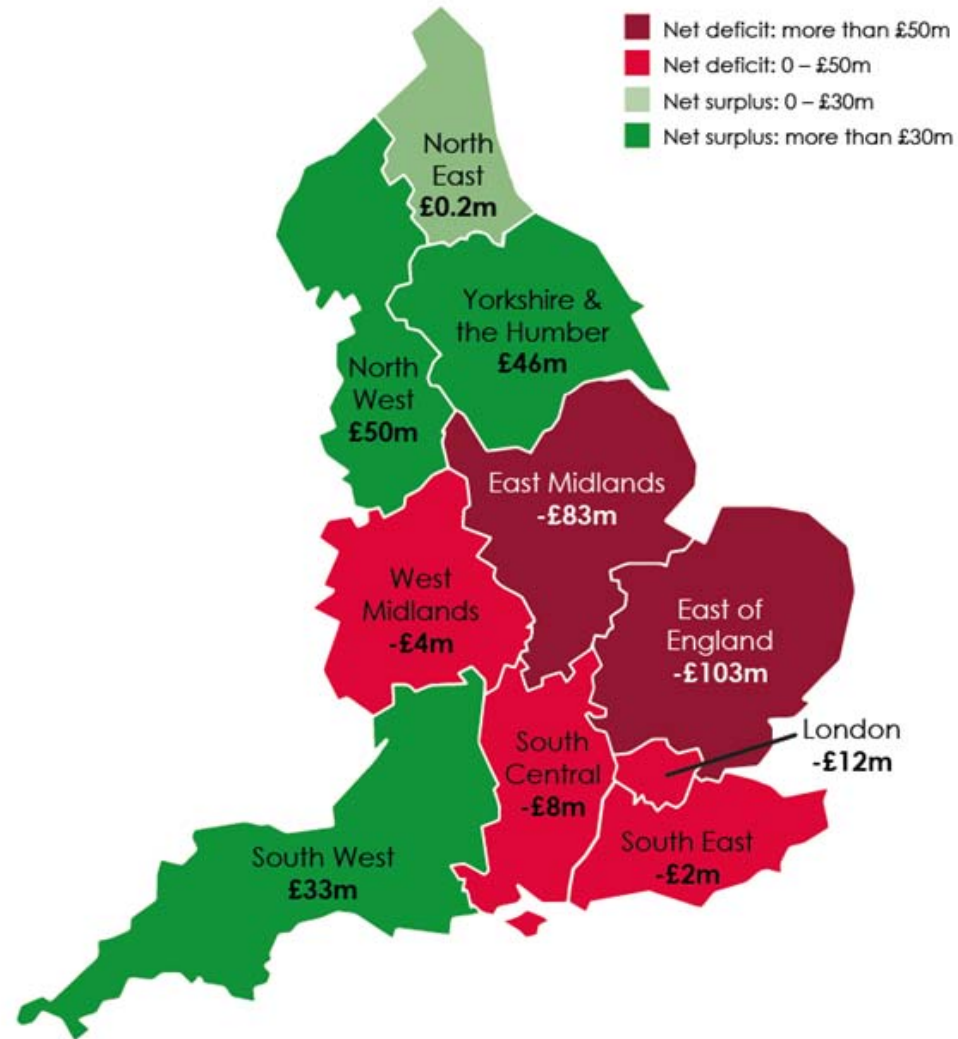


Figure 5: Total number and cost of temporary and permanent staff, 2012/13–2013/14

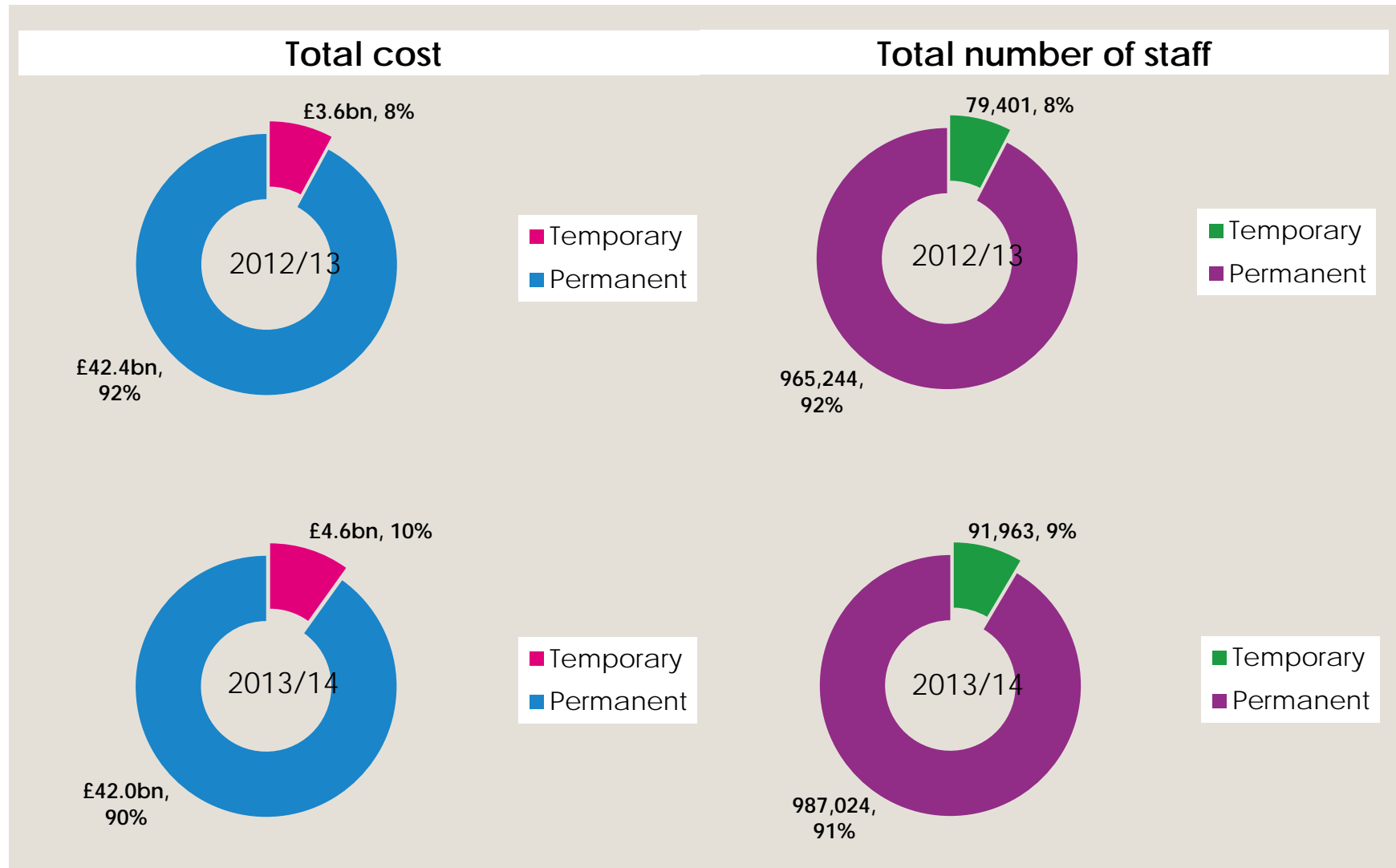


Figure 6: Temporary staff costs as a percentage of total staff costs in England, 2013/14

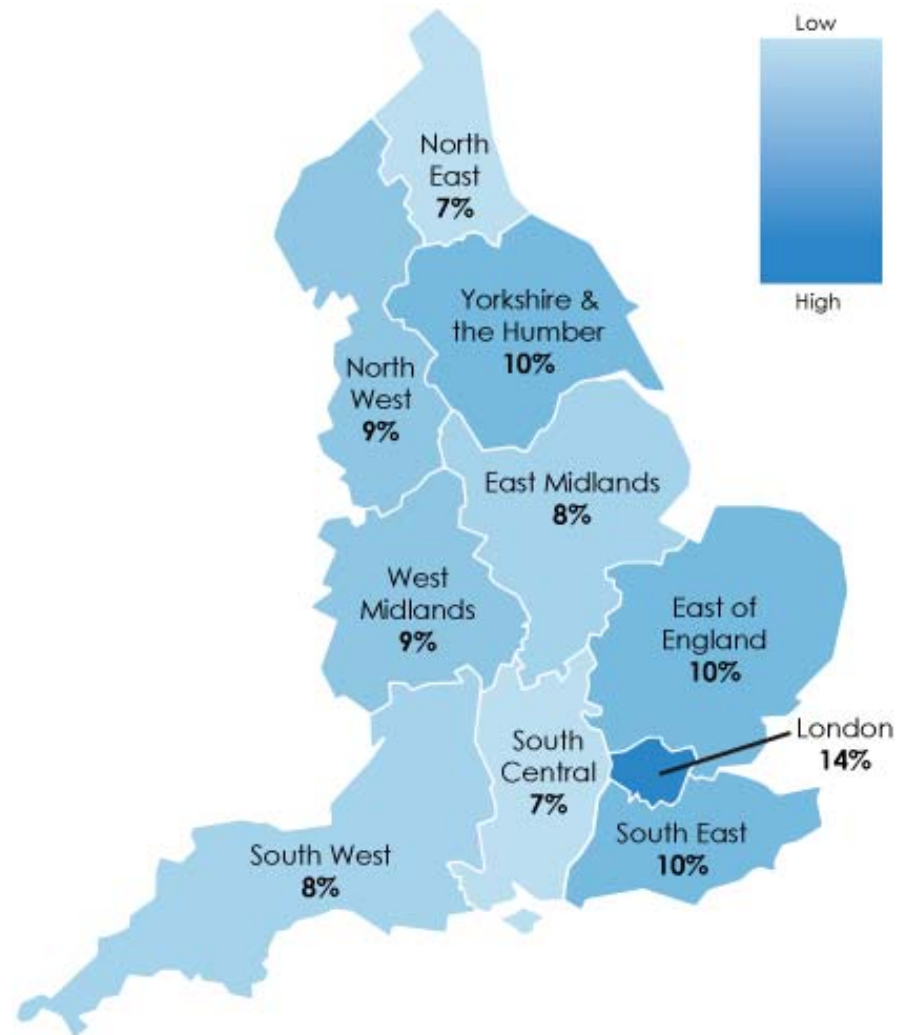


Figure 7: Use of temporary staff by acute trust, 2013/14

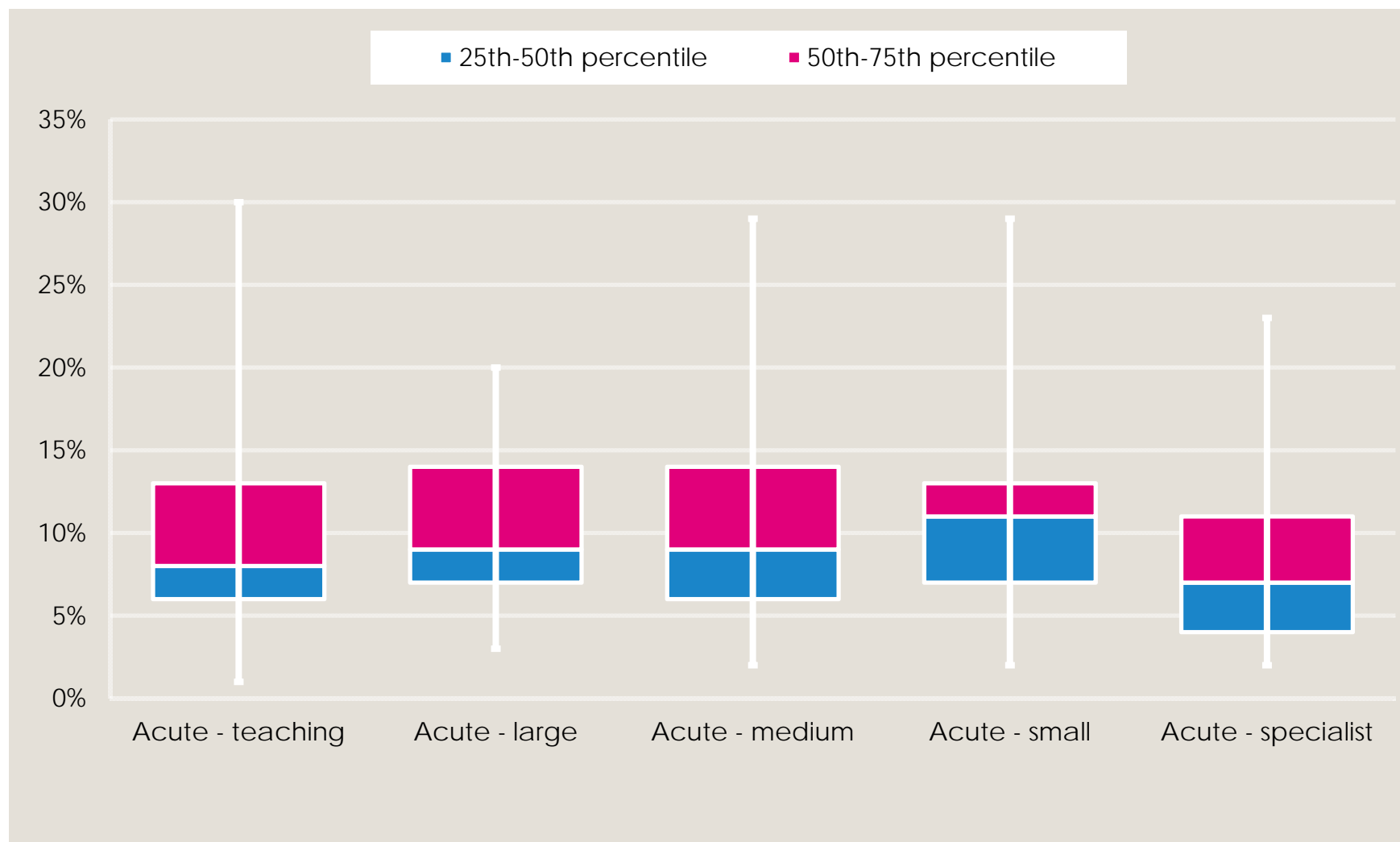
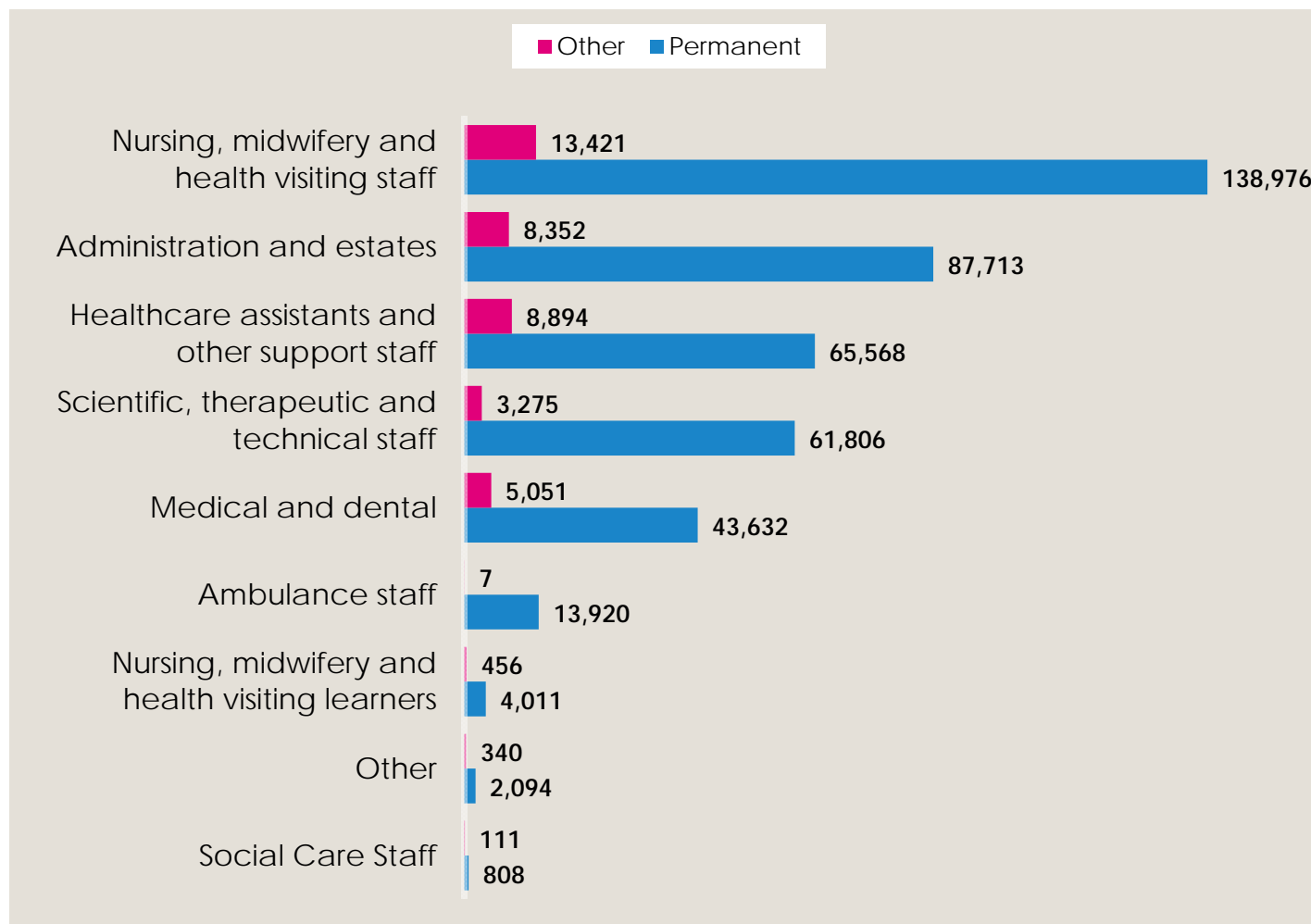
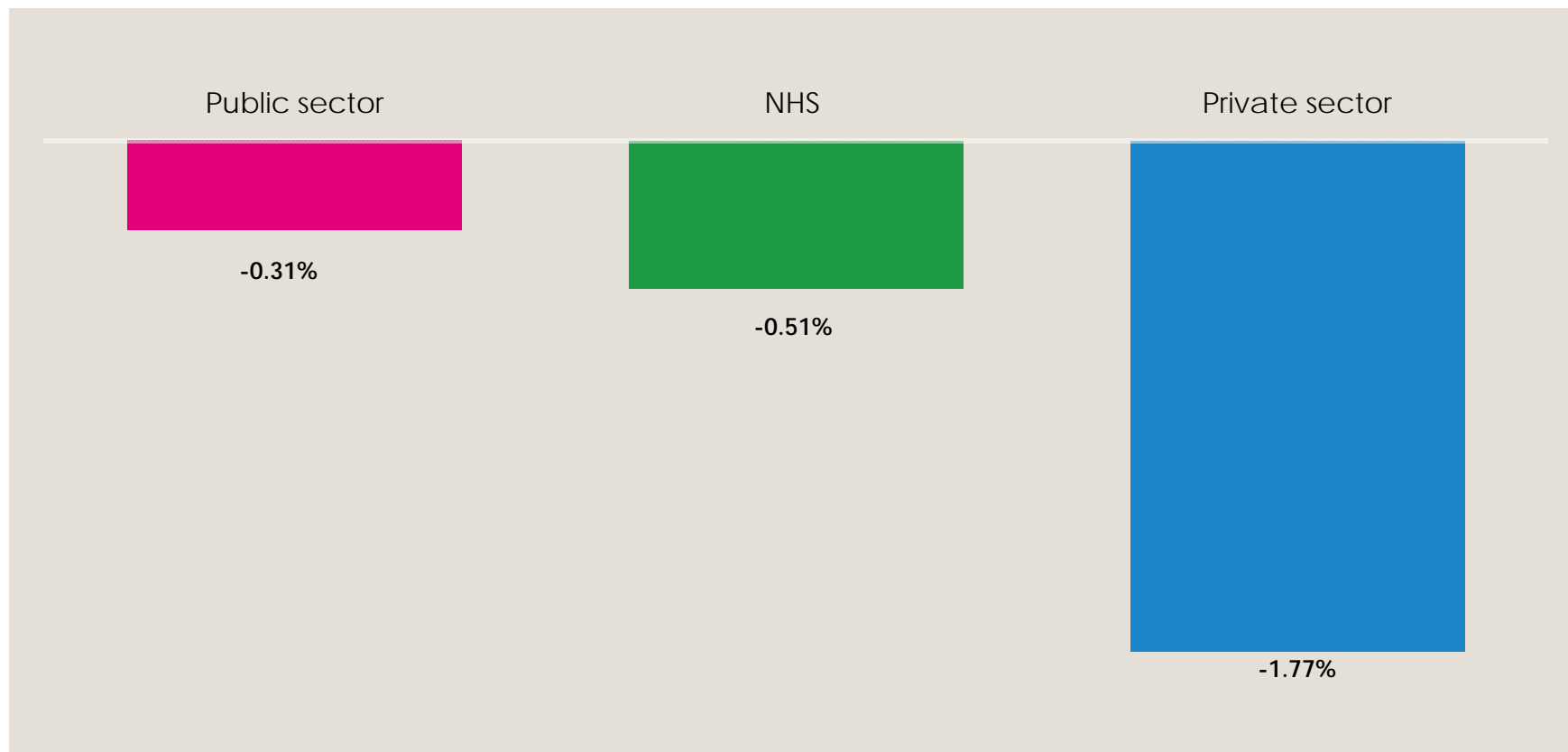


Figure 8: Skill mix of NHS trusts' permanent and non-permanent staff, 2013/14



Note: Figures on staff number by skill are not available for foundation trusts and this figure therefore only includes the 102 NHS trusts

Figure 9: Annual average real terms change in average earning per person from 2009/10 to 2013/14



Source: HSCIC NHS Staff Earnings Estimates to January 2014; Provisional statistics, ONS Annual Survey of Hours and Earnings
Note: Average earnings for NHS staff in England exclude earnings of staff employed under bank and agency contracts. Public and private sector pay refers to average annual gross pay per person for all UK employees, while NHS pay refers to average earning per employee of the English NHS

Figure 10: Productivity, technical and allocative efficiency

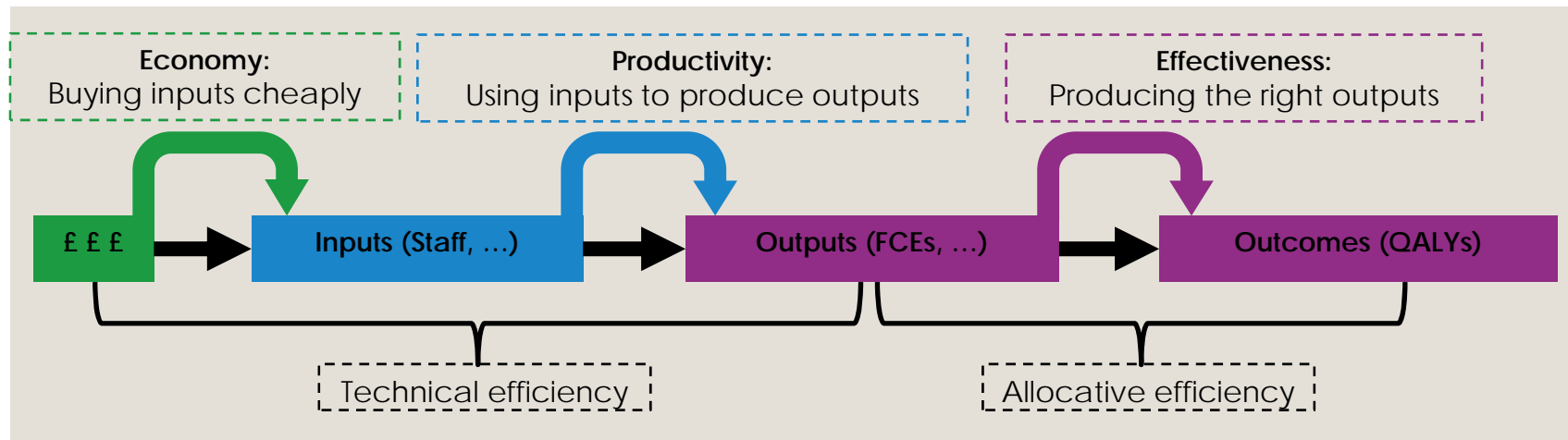


Figure 11: Change in hospital productivity from 2009/10 to 2013/14

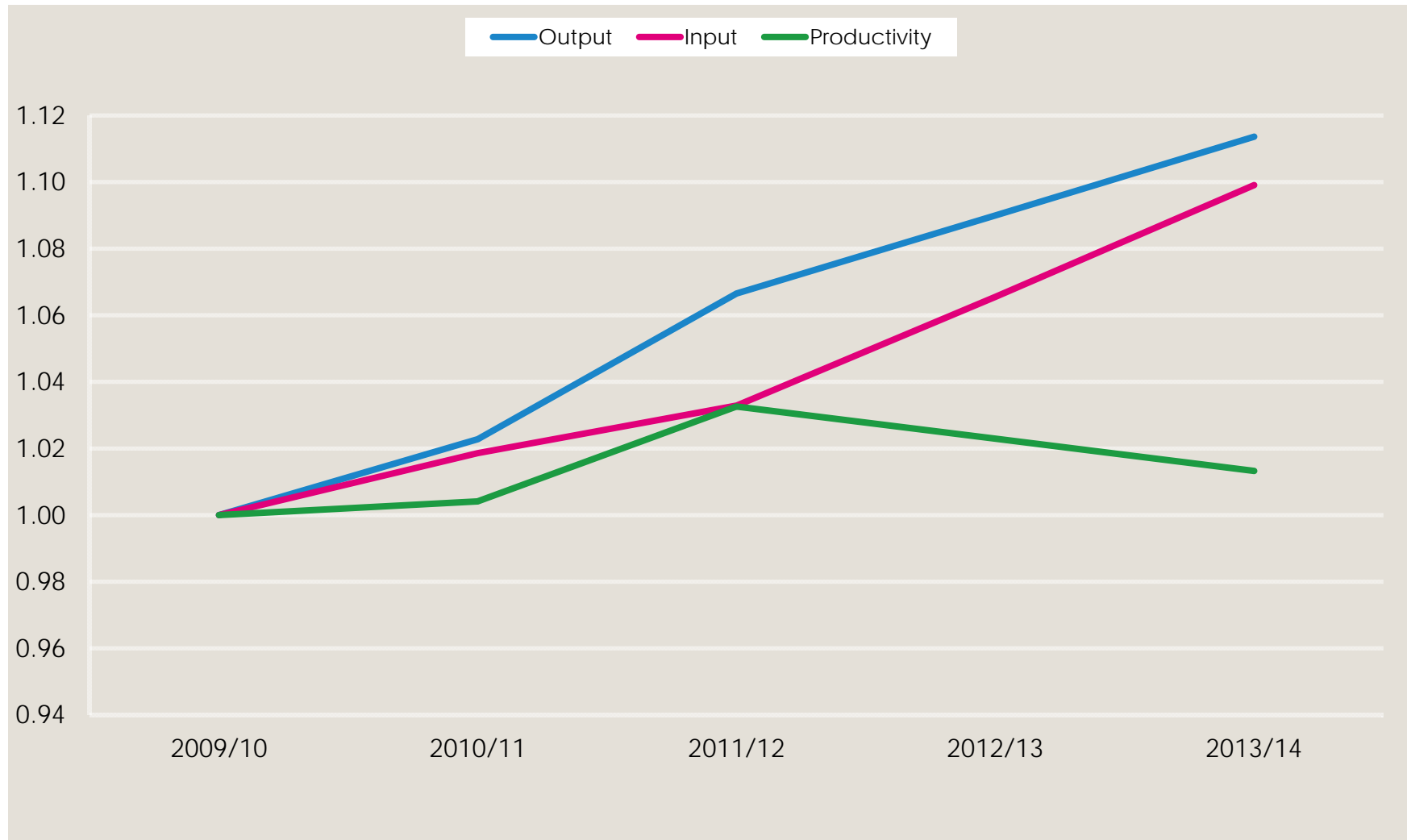


Figure 12: Annual change in hospital productivity index from 2011/12 to 2013/14

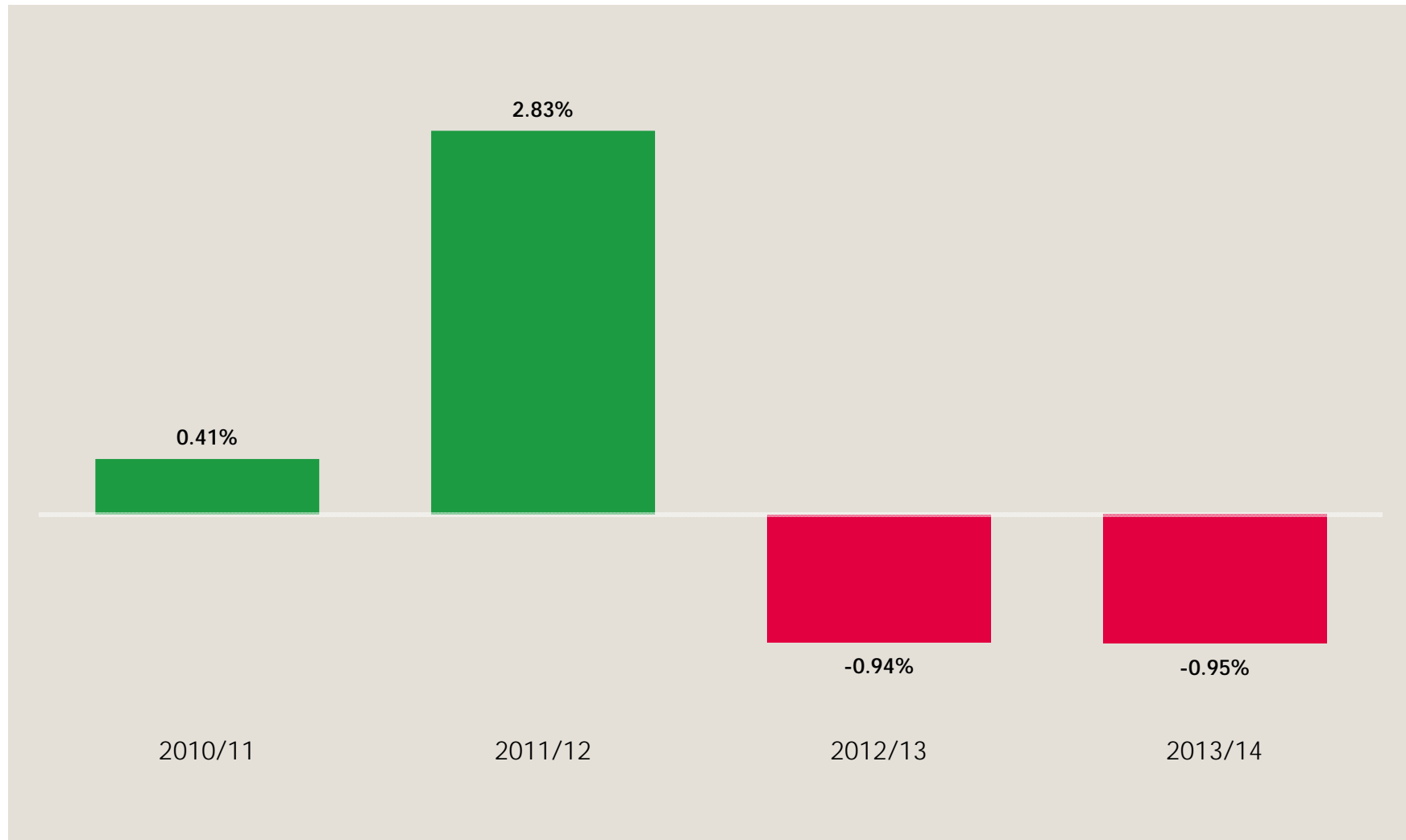


Figure 13: Average hospital productivity by region in England, 2013/14

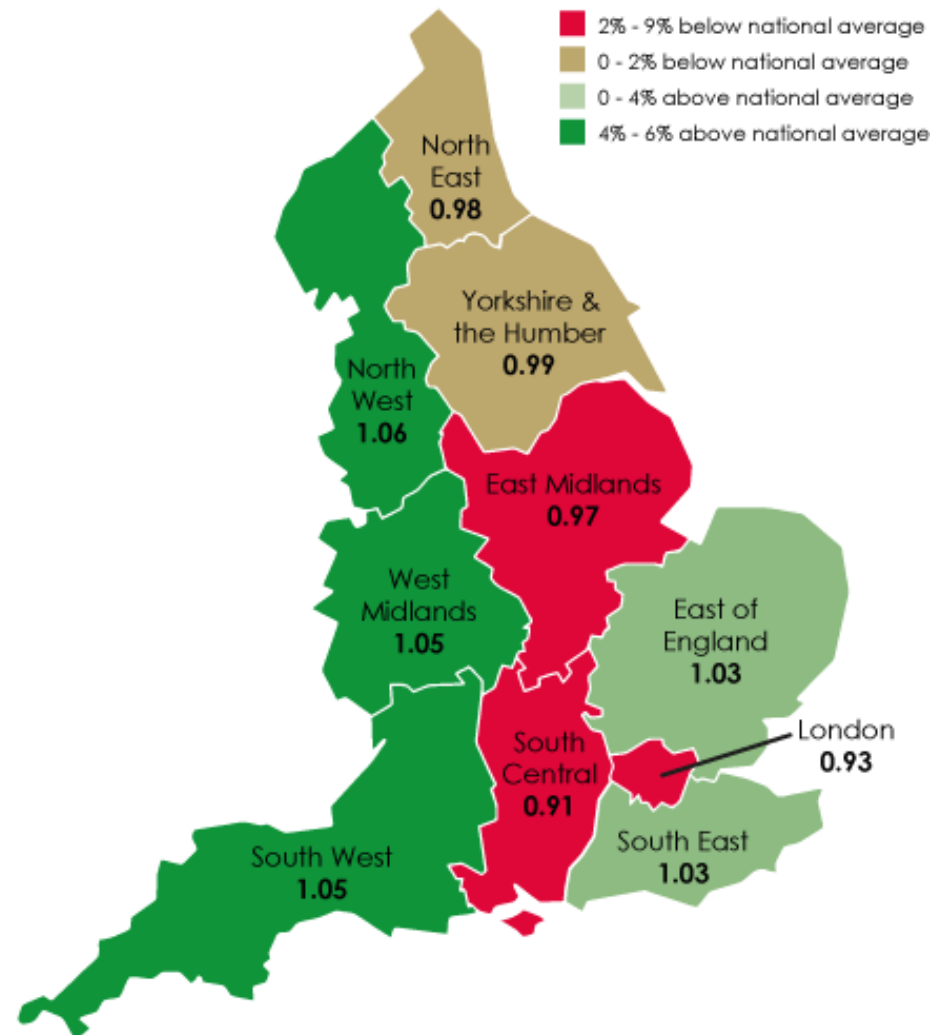


Figure 14: Variation in productivity index of hospitals by size

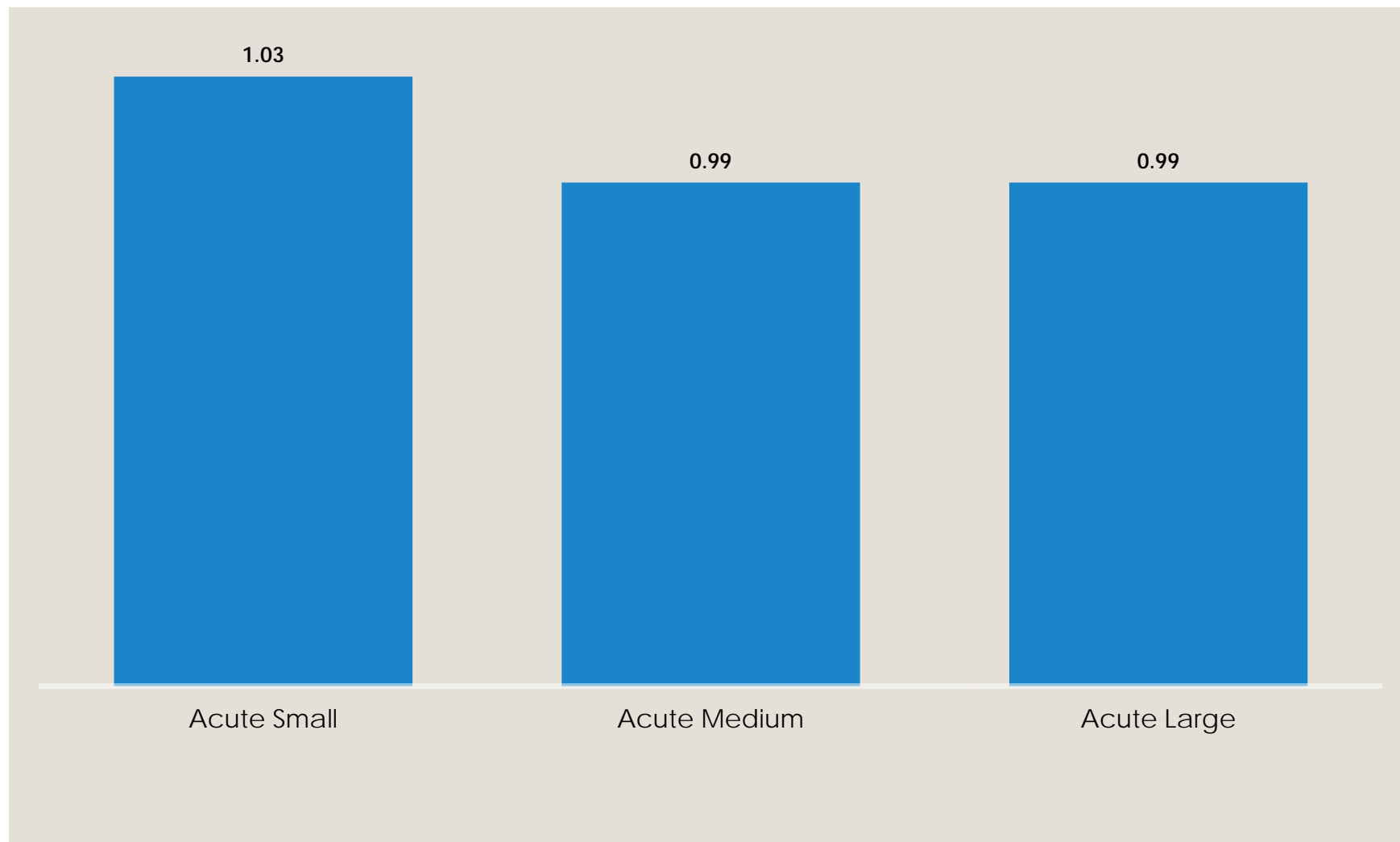


Figure 15: Variation in productivity of hospitals from 2009/10 to 2013/14

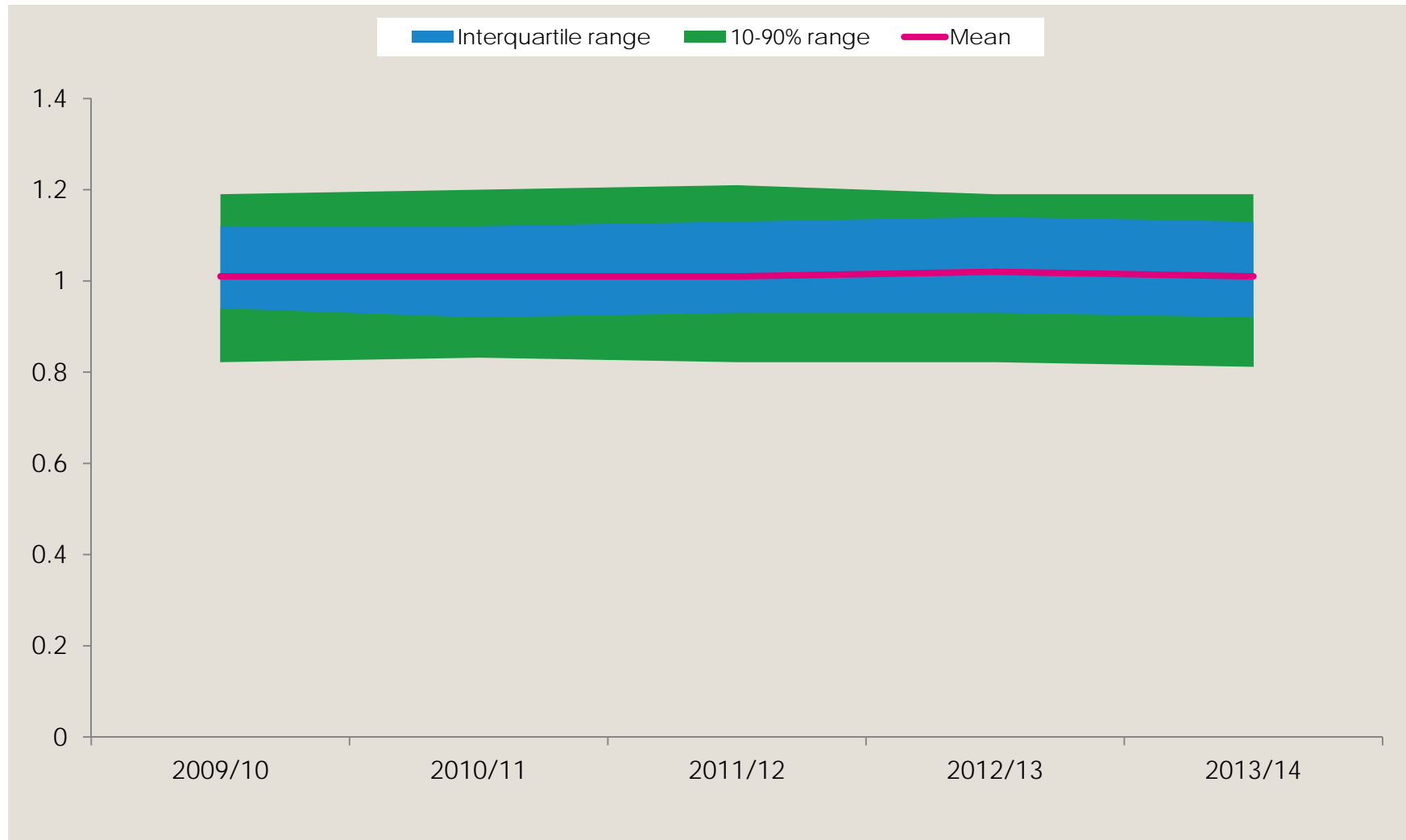


Figure 16: Variation in productivity among acute trusts between 2009/10 and 2013/14

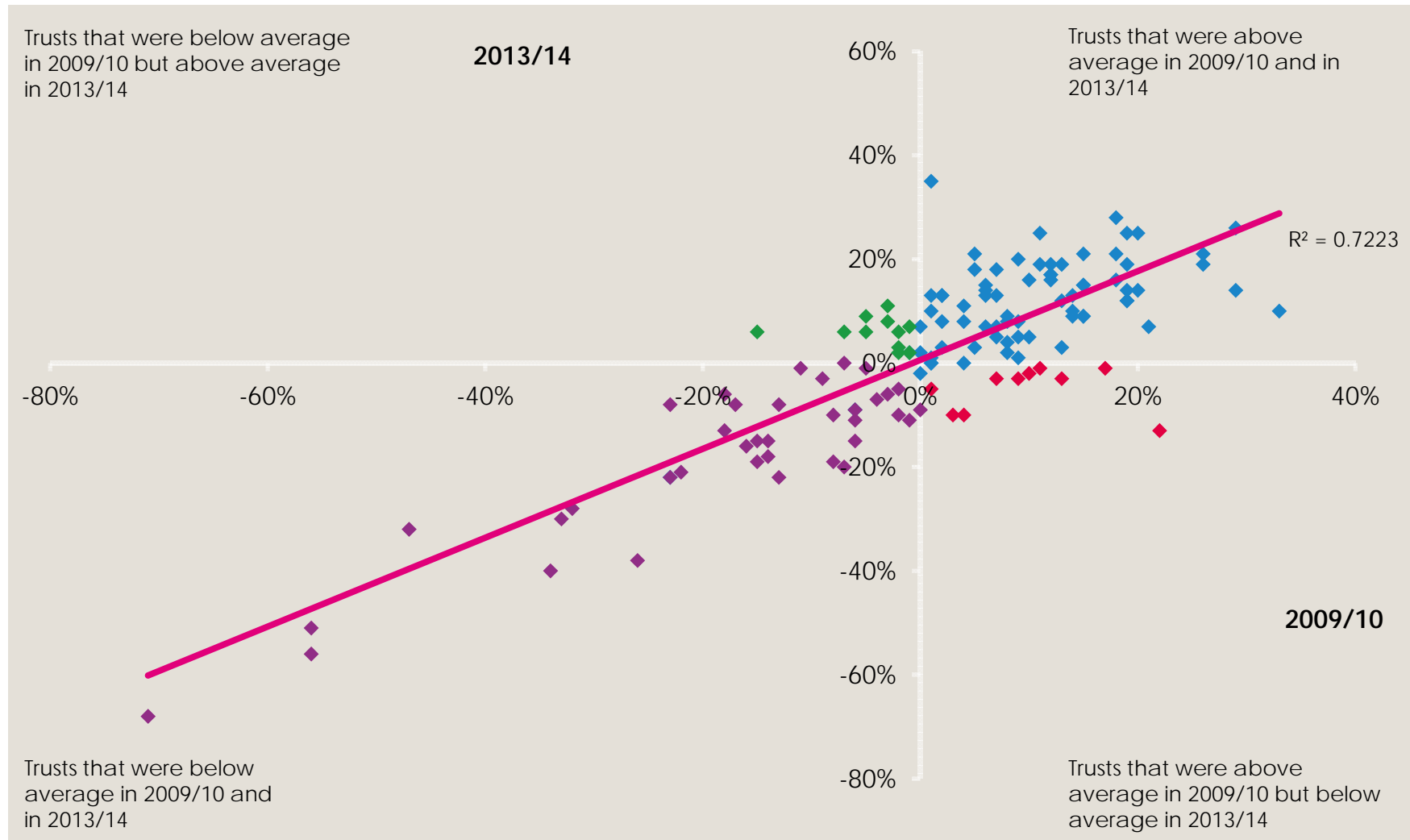


Figure 17: Variation in productivity among mental health trusts in 2012/13 and 2013/14

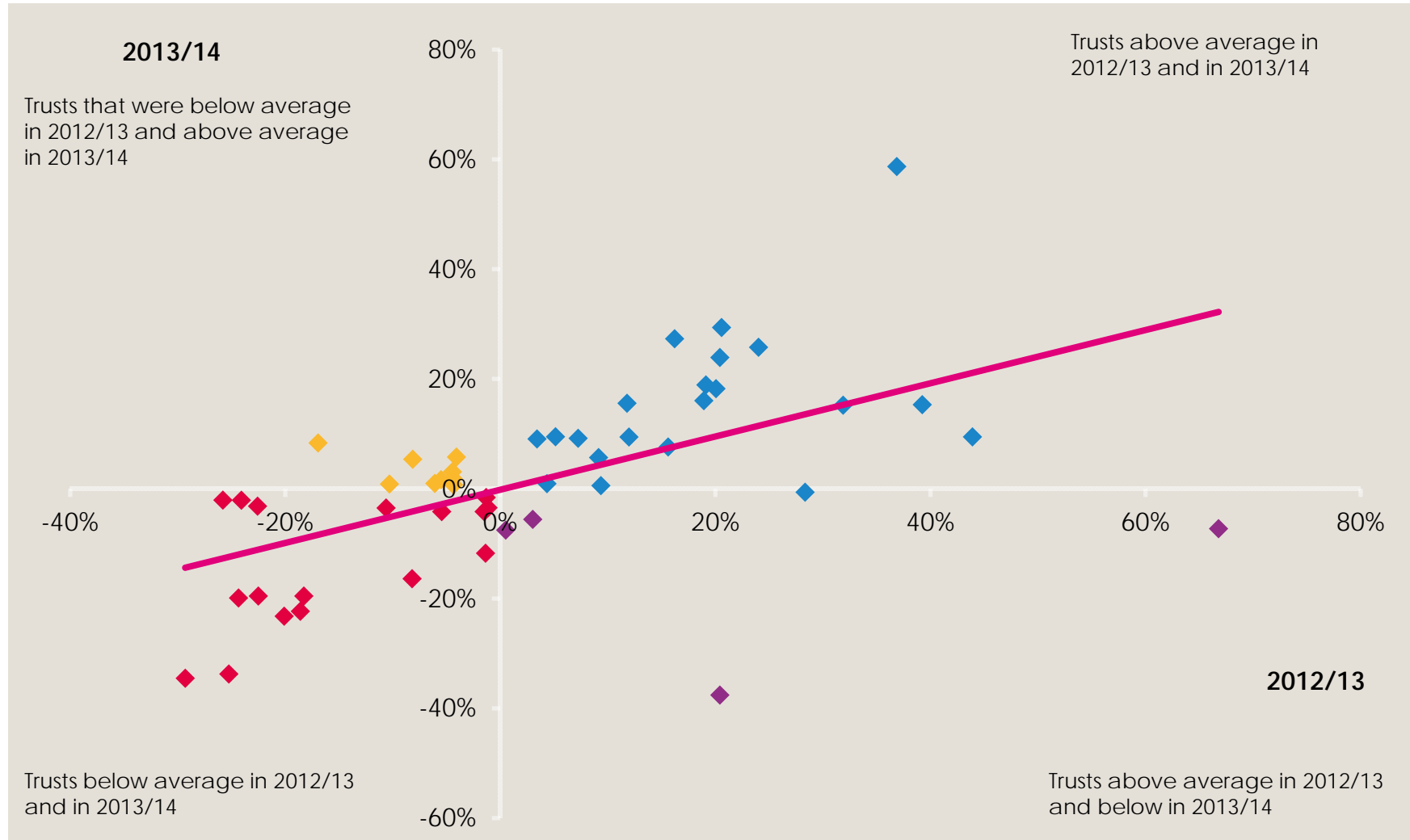


Figure 18: Changes in NHS nurse numbers, 2012/13 and 2013/14

